



UNIFORM CRIME REPORTING PROGRAM
UCR STATISTICAL DATA VERIFICATION FORM

As an agency administrator or designee for the _____, I have
(Name of Agency)
reviewed the UCR monthly statistics for **November 2007** which includes all UCR data submitted year to date. Based upon my or my designee's review and validation of same, I find that:

All data contained in the report for my agency is accurate and complete and may be released and made part of UCR publications for future distribution to the public and other interested UCR data subscribers.

Data contained in the report is inaccurate or incomplete and may not be published or released at this time. (If this choice is selected, please provide the reason in the space provided below.)

Reason: _____

The corrected data will be supplied to the UCR Program by: _____.
(Date)

This document must be signed and mailed to the Uniform Crime Reporting Program, 333 W. Nye Lane Suite 100, Carson City, Nevada 89706 or faxed to (775) 684-6268 by **April 4th , 2008**.

Signature of Agency Administrator (or designee)

Name/Title of Agency Administrator (print or type)

Agency's Name/Location

Date



Disclaimer: The following information is preliminary and cannot be certified until it is published in the annual report, Crime and Justice in Nevada, which will be available after July 1, 2008.



Monthly Report



**November
2007**



**Jearld L. Hafen, Director
Department of Public Safety**

**Capt Philip K. O'Neill, Division Chief
Records and Identification Bureau**

**Josh Porter, Statistician II
Pam Sebring, Administrative Assistant IV
Sherri Sharp, Administrative Assistant II**

**Prepared by:
Records and Identification Bureau
Uniform Crime Reporting
333 W. Nye Lane Ste 100
Carson City, Nevada 89706
(775) 684-6262**



Nevada UCR Definitions / Explanations

Uniform Crime Reporting Program

The UCR program is a nationwide, cooperative, statistical effort by over 17,000 city, county and state law enforcement agencies that voluntarily report data on crimes brought to their attention. Law enforcement agencies active in the national program represent 95% of the total population of the United States. While the program's primary objective is to generate a reliable set of crime statistics for use in law enforcement administration, operation and management, its data has over the years become one of the country's leading social indicators.

In Nevada, 39 agencies are currently reporting UCR data to the statewide program representing nearly 99% of its population. Rather than submitting directly to the FBI, local agencies must submit crime data to the state UCR Repository, which compiles, analyzes and submits copies of the reports to the FBI. The Nevada UCR Program prides itself on its responsiveness to local contributing agencies that previously received limited feedback for their efforts. The Nevada program is also responsible for producing and distributing periodic reports of the information contained in its database. As its database has grown, the program's utility has become even more apparent.

Eight offenses serve as an index for gauging fluctuations in overall volumes and rates of crime. Known collectively as the " Crime Index, " these offenses include *the violent crimes of murder, rape, robbery and assault and the property crimes of burglary, larceny, motor vehicle theft and arson*. These offenses were selected as a grouped measuring device because they represent the most common crime problems. They are all serious crimes; either by their very nature or due to the volume and frequency with which they occur.

Index Crimes Definitions

Murder and Non-negligent Manslaughter

Murder and non negligent manslaughter, as defined in the Uniform Crime Reporting Program, is the willful (non-negligent) killing of a human being by another.

The classification of this offense, as for all other Crime Index offenses, is based solely on police investigation as opposed to the determination of a court, medical examiner, coroner, jury or other judicial entity. Not included in the count for this offense classification are deaths caused by negligence, suicide or accident, justifiable homicides and attempts to murder or assaults to murder. These are scored as aggravated assaults.

Nevada UCR Definitions / Explanations

Forcible Rape

Forcible rape, as defined in the program, is the carnal knowledge of a female forcibly and against her will. Assaults or attempts to commit rape by force or threat of force are also included; however, statutory rape (without force) and other sex offenses are excluded.

Robbery

Robbery is the taking or attempting to take anything of value from the care, custody or control of a person or persons by force or threat of force or violence and/or by putting the victim in fear.

Aggravated Assault

Aggravated assault is an unlawful attack by one person upon another for the purpose of inflicting severe or aggravated bodily injury. This type of assault is usually accompanied by the use of a weapon or by means likely to produce death or great bodily harm. Attempts are included since it is not necessary that an injury result when a gun, knife or other weapon is used which could and probably would result in serious personal injury if the crime were successfully completed

Burglary

The Uniform Crime Reporting Program defines burglary as the unlawful entry of a structure to commit a felony or theft. The use of force to gain entry is not required to classify an offense as burglary. Burglary in this program is categorized into three sub classifications: forcible entry, unlawful entry where no force is used and attempted forcible entry.

Larceny-Theft

Larceny-theft is the unlawful taking, carrying, leading, or riding away of property from the possession or constructive possession of another. It includes crimes such as shoplifting, pocket picking, purse-snatching, thefts from motor vehicles, thefts of motor vehicle parts and accessories, and bicycle thefts, etc., in which no use of force, violence, or fraud occurs. In the UCR Program, this crime category does not include embezzlement, "con" games, forgery, and worthless checks. Motor vehicle theft is also excluded from this category inasmuch as it is a separate Crime Index offense.

Motor Vehicle Theft

Defined as the theft or attempted theft of a motor vehicle, this offense category includes the stealing of automobiles, trucks, buses, motorcycles, motor scooters, snowmobiles, etc. The definition excludes the taking of a motor vehicle for temporary use by those persons having lawful access.

Nevada UCR

Definitions / Explanations

Arson

Arson is defined by the Uniform Crime Reporting Program as any willful or malicious burning or attempt to burn, with or without intent to defraud, a dwelling house, public building, a motor vehicle or aircraft, personal property of another, etc. Only fires determined through investigation to have been willfully or maliciously set are classified as arsons. Fires of suspicious or unknown origins are excluded.

Population Estimates

State, county and incorporated city population estimates are prepared and reviewed prior to the end of each calendar year for certification by the governor by March 1. The Nevada Department of Taxation and Nevada State Demographer, Bureau of Business and Economic Research, College of Business Administration, University of Nevada, Reno, prepares these estimates.

Crime Rates

Crime rates involve the number of Index Crimes per unit of population, usually per 100,000 persons. Because Nevada has such a low population, a rate per 1,000 persons is used to reflect a more realistic volume. No attempt is made to incorporate transient populations or other factors that contribute to the ratio and types of crime in given areas. Any effort to make comparisons of crime rates between areas should be tempered by these population and environmental variables.

Crime rates are one of the most meaningful statistical elements. Computation of crime rates per 1,000 population is achieved by dividing the community's population by 1,000, then dividing the number of offenses in each class by that number. The answer is the number of offenses per 1,000 population and is the crime rate for that particular offense. In Table 2, the County Total Crime Rate is computed after subtracting the population figure for all non-reporting agencies for the current month.

The index offense "Aggravated Assault" is an item of special interest to users of Nevada's UCR report. In Tables 1 & 3, where Nevada and National crime rates are compared, "simple assaults" are subtracted from the total of all assaults following FBI UCR rules, thus allowing for direct comparison. However, total assaults (simple and aggravated) are also presented in the Nevada report. This is because the Nevada UCR staff believes this figure is an important indicator of risk for citizens and it presents a more balanced picture of this portion of the crime index to law enforcement personnel.

The Federal Bureau of Investigation, Uniform Crime Reporting Section, publishes national rates.

Clearance Rates

The percentage of crimes cleared is obtained by dividing the number of offenses cleared by the number of offenses known. This number is then multiplied by 100.

Nevada--Statewide Summary--UCR Index Crimes

November 2007

Offense	Crimes this Month	# Cleared this Month	% Cleared this Month	Crimes this YTD	# Cleared this YTD	% Cleared this YTD	November Crimes 2006	November Cleared 2006	% November Cleared 2006	2007 NV Rate / 1,000 (Proj) *	2006 NV Rate / 1,000	2006 Natl. Rate / 1,000
Murder	15	7	47	181	126	70	21	23	110	0.07	0.08	0.06
Rape	91	15	16	1,012	212	21	97	13	13	0.42	0.36	0.32
Robbery	595	113	19	6,304	1,405	22	641	110	17	2.37	2.25	1.41
Assault *	802	386	48	10,261	4,717	46	762	317	42	3.93	4.04	2.91
Burglary	1,930	174	9	22,685	2,057	9	2,082	214	10	8.61	9.85	7.27
Larceny	3,674	921	25	45,657	8,949	20	4,375	833	19	17.44	19.95	22.86
MV Theft	1,510	176	12	20,766	2,057	10	2,076	203	10	8.00	9.04	4.17
Arson	46	7	15	585	87	15	41	9	22	0.22	0.32	0.27
Total	8,663	1,799	21	107,451	19,610	18	10,095	1,722	17	41.07	45.90	39.27

* The projected Crime Rate for Assaults is computed after subtracting Simple Assaults from the total for all Assaults following FBI guidelines. Therefore, this rate may be compared directly to the National Rate. See Table 3 and the "Footnotes/Exceptions page for further information.

Nevada UCR - - Monthly Crime/ Clearance Summary - - All Crimes

Contributing Agency	Est. Pop	Murder		Rape		Robbery		Assault		Burglary		Larceny		MV Theft		Arson		Total Crimes	Crime Rate	Clearances	Clearance Rate
November 2007																					
Carson County																					
Carson SO	57,701	0	0	0	0	0	0	69	36	17	0	56	9	10	4	2	0	154	2.67	49	31.8%
County Total	57,701	0	0	0	0	0	0	69	36	17	0	56	9	10	4	2	0	154	2.67	49	31.8%
Churchill County																					
Churchill SO	19,072	0	0	1	0	0	0	23	15	2	3	16	6	2	2	0	0	44	2.31	26	59.1%
Fallon PD	8,299	0	0	0	0	0	1	14	12	2	2	18	7	3	0	1	0	38	4.58	22	57.9%
County Total	27,371	0	0	1	0	0	1	37	27	4	5	34	13	5	2	1	0	82	3.00	48	58.5%
Clark County																					
Boulder PD	15,478	0	0	0	0	0	0	4	2	12	0	7	0	2	0	1	0	26	1.68	2	7.7%
Clark Co. Sci	313,606	0	0	0	0	0	0	0	0	0	0	0	0	0	0	0	0	0	0.00	0	0.0%
Henderson	251,321	1	1	7	2	18	4	221	149	142	35	207	57	106	5	2	1	704	2.80	254	36.1%
LV Metro PD	1,391,866	11	5	60	6	450	85	2,305	1,049	1,217	65	2,041	506	1,064	126	22	0	7,170	5.15	1,842	25.7%
LV Fire Dept*																9	4	9	N/A	4	44.4%
Mesquite	17,656	0	0	0	0	0	0	17	14	0	0	27	10	6	1	0	0	50	2.83	25	50.0%
North Las Ve	198,516	2	0	2	1	64	8	287	145	172	11	308	74	159	9	2	1	996	5.02	249	25.0%
Taxicab Authority		0	0	0	0	0	0	8	5	0	0	5	0	0	0	0	0	13	0.00	5	38.5%
UNLV PD*	30,223	0	0	0	0	0	0	0	0	0	0	32	1	0	0	0	0	32	1.06	1	3.1%
County Total	1,874,837	14	6	69	9	532	97	2,842	1,364	1,543	111	2,627	648	1,337	141	36	6	9,000	4.80	2,382	26.5%
Douglas County																					
Douglas SO	51,770	0	0	1	0	0	0	69	17	9	0	28	4	6	1	0	0	113	2.18	22	19.5%
County Total	51,770	0	0	1	0	0	0	69	17	9	0	28	4	6	1	0	0	113	2.18	22	19.5%

*Population figure not included in county total
Table 2

5
Assault data includes ALL assaults (aggravated and simple).

Nevada UCR - - Monthly Crime/ Clearance Summary - - All Crimes

Contributing Agency	Est. Pop	Murder		Rape		Robbery		Assault		Burglary		Larceny		MV Theft		Arson		Total Crimes	Crime Rate	Clearances	Clearance Rate
Elko County																		November 2007			
Elko SO	23,004	0	0	0	0	1	0	15	9	8	2	3	1	0	0	0	0	27	1.17	12	44.4%
Carlin PD	2,281	0	0	0	0	0	0	1	0	1	0	0	0	0	0	0	0	2	0.88	0	0.0%
Elko PD	18,183	0	0	2	0	1	0	27	20	6	2	27	3	3	1	0	0	66	3.63	26	39.4%
WestWendov	4,871	0	0	0	0	0	0	4	3	2	0	10	3	0	0	0	0	16	3.28	6	37.5%
County Total	48,339	0	0	2	0	2	0	47	32	17	4	40	7	3	1	0	0	111	2.30	44	39.6%
Esmeralda County																					
Esmeralda S	1,262	0	0	0	0	0	0	0	0	0	0	0	0	0	0	0	0	0	0.00	0	0.0%
County Total	1,262	0	0	0	0	0	0	0	0	0	0	0	0	0	0	0	0	0	0.00	0	0.0%
Eureka County																					
Eureka SO	1,460	0	0	0	0	0	0	3	3	0	0	0	0	1	0	0	0	4	2.74	3	75.0%
County Total	1,460	0	0	0	0	0	0	3	3	0	0	0	0	1	0	0	0	4	2.74	3	75.0%
Humboldt County																					
Humboldt SO	10,108	0	0	0	0	0	0	6	6	1	0	0	0	1	1	0	0	8	0.79	7	87.5%
Winnemucca	7,643	0	0	0	0	0	0	6	6	4	2	4	1	2	0	0	0	16	2.09	9	
County Total	17,751	0	0	0	0	0	0	12	12	5	2	4	1	3	1	0	0	24	1.35	16	66.7%

*Population figure not included in county total
Table 2

6
Assault data includes ALL assaults (aggravated and simple).

Nevada UCR - - Monthly Crime/ Clearance Summary - - All Crimes

Contributing Agency	Est. Pop	Murder		Rape		Robbery		Assault		Burglary		Larceny		MV Theft		Arson		Total Crimes	Crime Rate	Clearances	Clearance Rate
November 2007																					
Lander County																					
Lander SO	5,655	0	0	0	0	0	0	0	0	0	0	0	0	0	0	0	0	0	0.00	0	0.0%
County Total	5,655	0	0	0	0	0	0	0	0	0	0	0	0	0	0	0	0	0	0.00	0	0.0%
Lincoln County																					
Lincoln SO	3,987	0	0	0	0	0	0	1	0	0	1	2	0	0	0	0	0	3	0.75	1	33.3%
County Total	3,987	0	0	0	0	0	0	1	0	0	1	2	0	0	0	0	0	3	0.75	1	33.3%
Lyon County																					
Lyon SO	50,774	0	0	0	0	1	0	53	33	16	3	32	2	2	2	1	0	105	2.07	40	38.1%
Yerington PD	3,257	0	0	0	0	0	0	2	3	2	1	1	0	0	0	0	0	5	1.54	4	80.0%
County Total	54,031	0	0	0	0	1	0	55	36	18	4	33	2	2	2	1	0	110	2.04	44	40.0%
Mineral County																					
Mineral SO	4,399	0	0	1	1	0	0	1	1	1	0	1	0	0	0	0	0	4	0.91	2	50.0%
County Total	4,399	0	0	1	1	0	0	1	1	1	0	1	0	0	0	0	0	4	0.91	2	50.0%
Nye County																					
Nye SO	44,795	0	0	0	0	1	0	50	47	18	7	37	18	9	7	0	0	115	2.57	79	68.7%
County Total	44,795	0	0	0	0	1	0	50	47	18	7	37	18	9	7	0	0	115	2.57	79	68.7%

*Population figure not included in county total
Table 2

Nevada UCR - - Monthly Crime/ Clearance Summary - - All Crimes

Contributing Agency	Est. Pop	Murder		Rape		Robbery		Assault		Burglary		Larceny		MV Theft		Arson		Total Crimes	Crime Rate	Clearances	Clearance Rate
Pershing County																		November 2007			
Pershing SO	4,528	0	0	0	0	0	0	1	1	2	1	2	0	0	0	0	0	5	1.10	2	40.0%
Lovelock PD	2,427	0	0	0	0	0	0	5	4	0	0	3	0	0	0	0	0	8	3.30	4	50.0%
County Total	6,955	0	0	0	0	0	0	6	5	2	1	5	0	0	0	0	0	13	1.87	6	46.2%
Storey County																					
Storey	4,110	0	0	0	0	0	0	0	0	0	0	0	0	0	0	0	0	0	0.00	0	0.0%
County Total	4,110	0	0	0	0	0	0	0	0	0	0	0	0	0	0	0	0	0	0.00	0	0.0%
Washoe County																					
Washoe SO	106,868	0	0	0	0	0	0	58	35	61	8	80	13	14	2	0	0	213	1.99	58	27.2%
Reno PD	214,371	1	1	12	4	46	15	373	202	168	14	528	161	88	11	5	1	1,221	5.70	409	33.5%
Sparks PD	87,846	0	0	4	0	13	0	103	69	64	17	177	41	30	4	1	0	392	4.46	131	33.4%
UNR PD*	16,671	0	0	0	0	0	0	1	0	1	0	7	0	1	0	0	0	10	0.60	0	0.0%
Washoe Co S	68,366	0	0	0	0	0	0	2	2	0	0	9	4	0	0	0	0	11	0.16	6	54.5%
TMCC PD*	14,161	0	0	0	0	0	0	0	0	0	0	0	0	0	0	0	0	0	0.00	0	0.0%
County Total	409,085	1	1	16	4	59	15	537	308	294	39	801	219	133	17	6	1	1,847	4.51	604	32.7%
White Pine County																					
White Pine S	9,542	0	0	1	1	0	0	1	1	2	0	6	0	1	0	0	0	11	1.15	2	18.2%
County Total	9,542	0	0	1	1	0	0	1	1	2	0	6	0	1	0	0	0	11	1.15	2	18.2%
Grand T	2,623,050	15	7	91	15	595	113	3,730	1,889	1,930	174	3,674	921	1,510	176	46	7	11,591	4.42	3,302	28.5%

*Population figure not included in county total
Table 2

Nevada UCR - - Monthly Crimes/Clearances Summary - - Index Crimes

November 2007

Est. Pop	Murder		Rape		Robbery		Assault		Burglary		Larceny		MV Theft		Arson		Total Crimes	Crime Rate	Total Clear	Clearance Rate	
Statewide Totals																					
(Crimes/Clearances)	2,623,050	15	7	91	15	595	113	802	386	1930	174	3674	921	1510	176	46	7	8663	3.30	1799	20.77

Nevada (Projected 2007) vs National (2006) Index Crime Rates

(per 1,000 population)

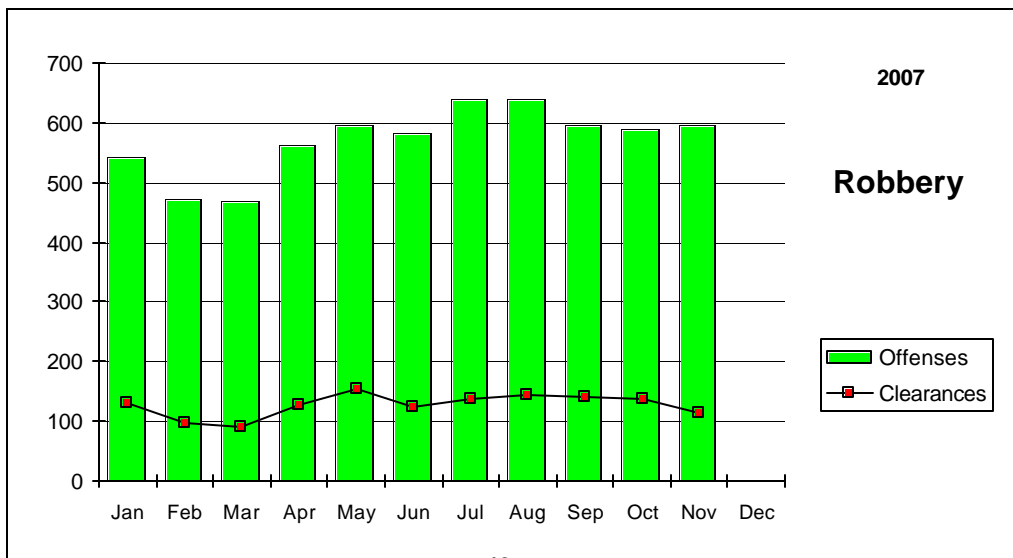
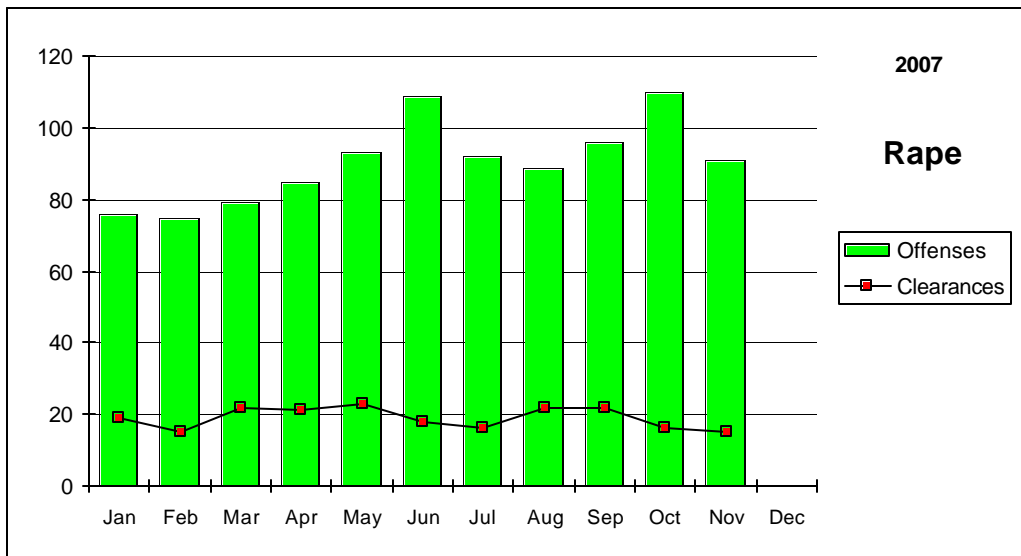
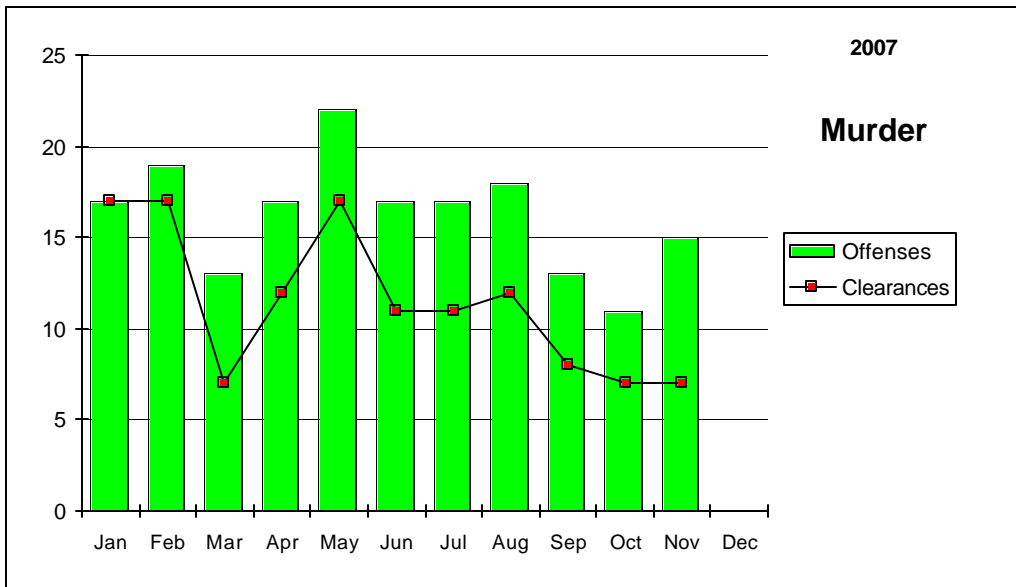
	Murder	Rape	Robbery	Assault	Burglary	Larceny	MV Theft	Arson	Crime Rate
Nevada	0.07	0.42	2.37	3.93	8.61	17.44	8.00	0.22	41.07
National	0.06	0.31	1.49	2.88	7.29	22.07	3.98	0.27	38.27

Nevada (Projected 2007) vs National (2006) Crime Clearance Rates

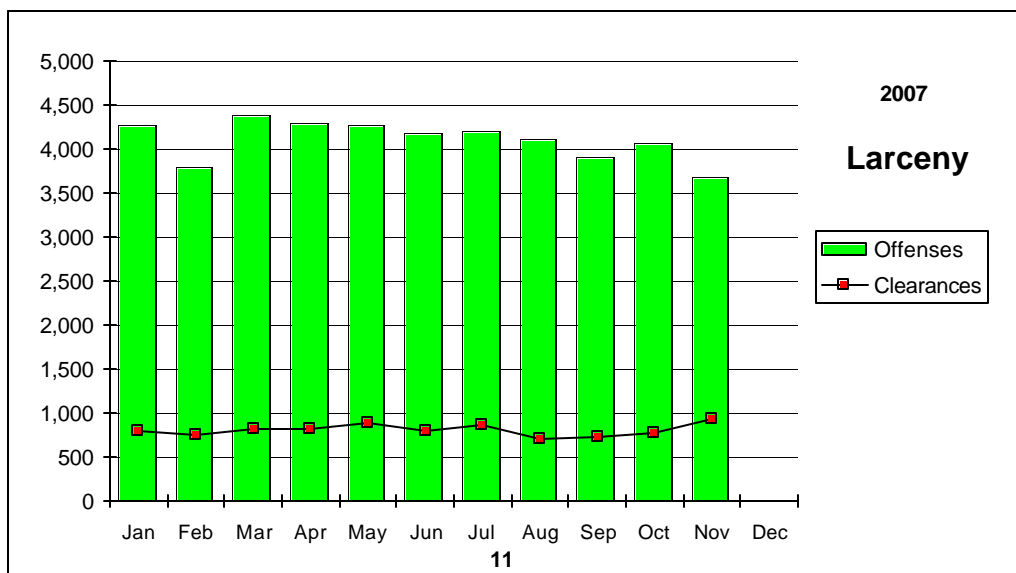
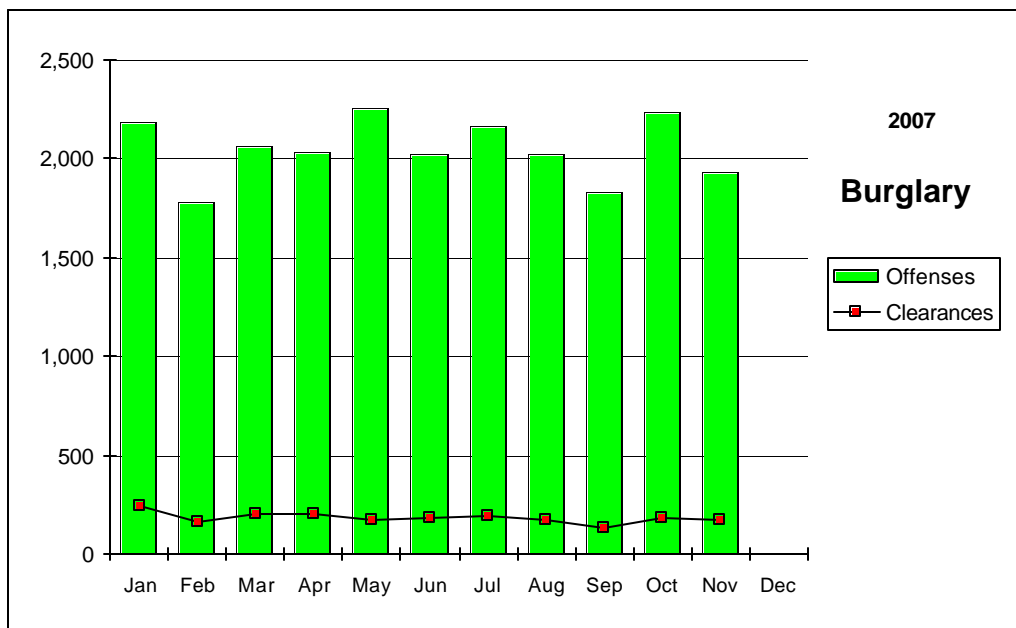
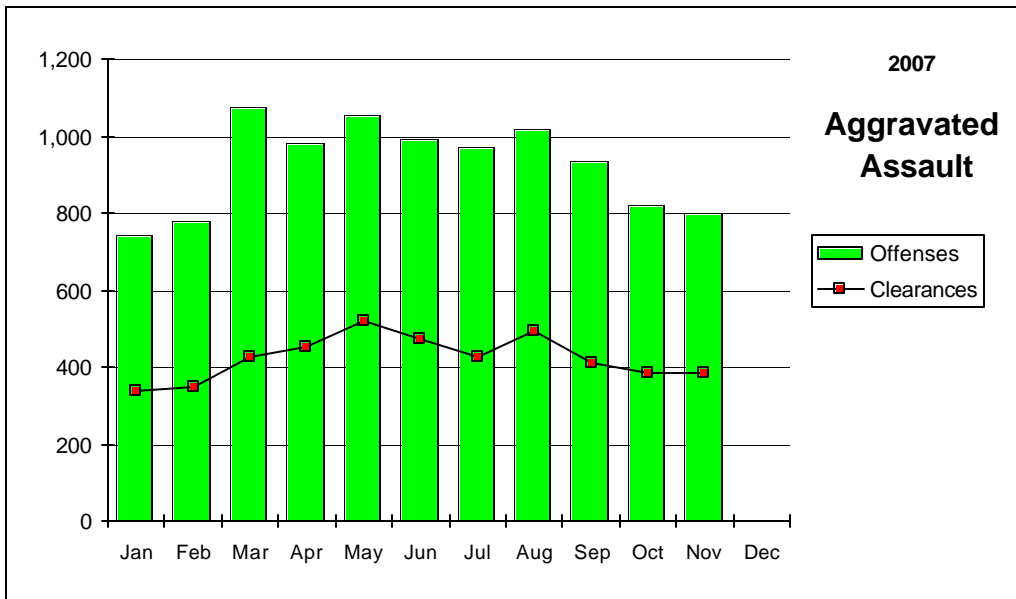
(by Percent)

	Murder	Rape	Robbery	Assault	Burglary	Larceny	MV Theft	Arson	Clear Rate
Nevada	72.6	20.9	22.6	45.7	9.0	19.1	9.7	14.9	14.9
National	60.7	40.9	25.2	54.0	12.6	17.4	12.6	18.0	19.3

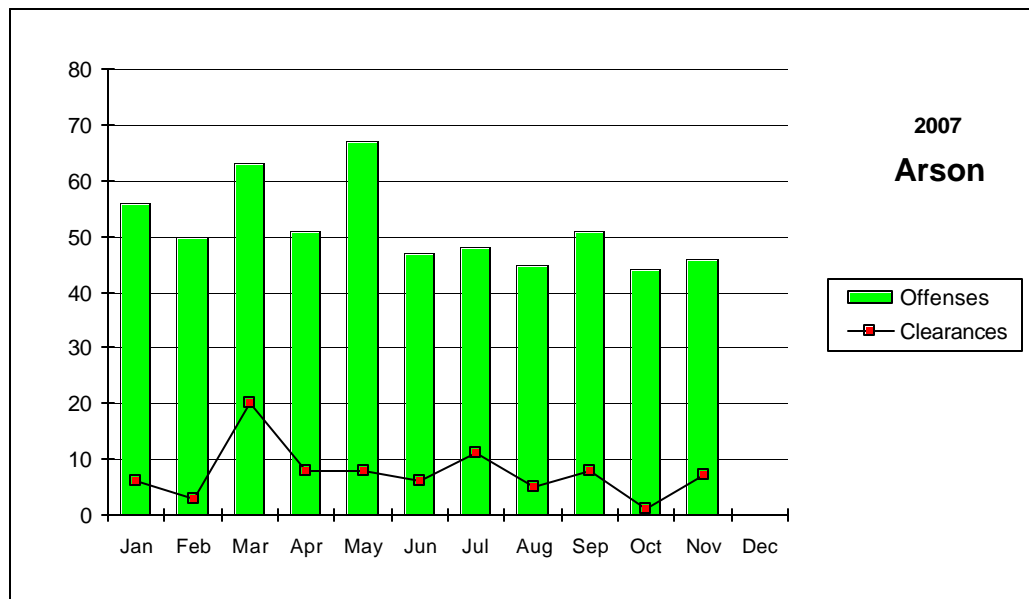
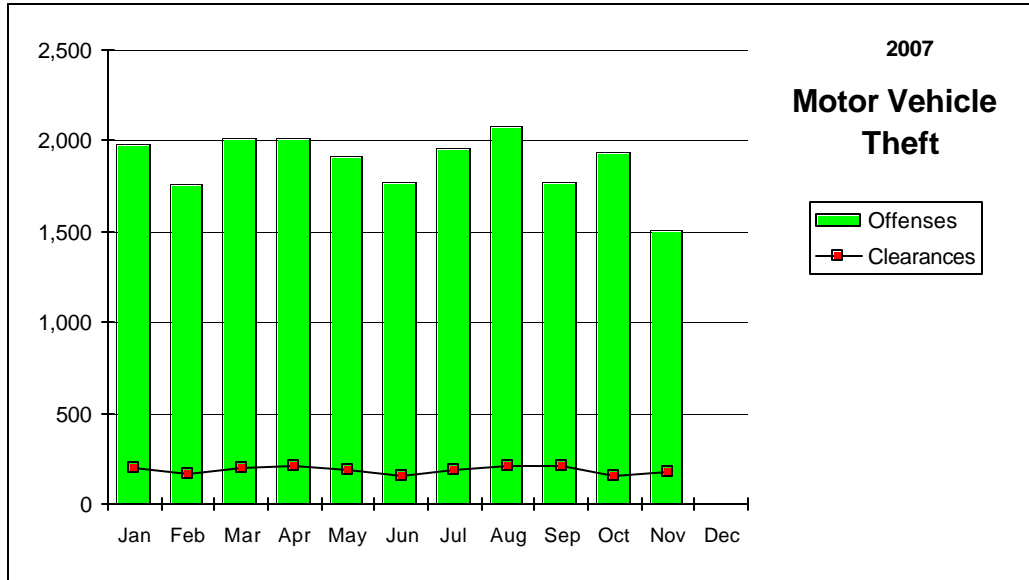
Nevada--Graphic Summary--UCR



Nevada--Graphic Summary--UCR



Nevada--Graphic Summary--UCR



Nevada--Murder--Incidence Level Variation--UCR

November 2007

Agency	November	November	2007 YTD		November	November	2006 YTD	
	2007 Offenses	2007 Cleared	Offenses	Cleared	2006 Offenses	2006 Cleared	Offenses	Cleared
Boulder	0	0	1	1	0	0	1	0
Carlin PD	0	0	0	0	0	0	0	0
Carson SO	0	0	1	2	0	0	3	1
Churchill SO	0	0	1	1	1	1	1	1
Clark Co Schl PD	0	0	0	0	0	0	0	0
Douglas SO	0	0	0	1	1	1	2	1
Elko PD	0	0	0	0	0	0	0	0
Elko SO	0	0	3	3	0	0	1	0
Esmeralda SO	0	0	0	0	0	0	0	0
Eureka SO	0	0	0	0	0	0	0	0
Fallon PD	0	0	0	0	0	0	0	0
Henderson PD	1	1	10	8	0	0	5	1
Humboldt SO	0	0	1	1	0	0	0	0
Lander SO	0	0	1	1	0	0	0	0
Lincoln SO	0	0	0	0	0	0	0	0
Lovelock PD	0	0	0	0	0	0	0	0
LV Fire Dept	0	0	0	0	0	0	0	0
LV Metro	11	5	112	79	13	6	142	96
Lyon SO	0	0	2	2	0	0	1	1
Mesquite PD	0	0	0	0	0	0	1	1
Mineral SO	0	0	0	0	0	0	0	0
NLVPD	2	0	24	6	3	0	20	8
Nye SO	0	0	2	2	1	1	3	4
Pershing SO	0	0	0	0	0	0	1	1
Reno PD	1	1	15	12	2	14	22	23
Sparks PD	0	0	4	4	0	0	3	4
Storey SO	0	0	0	0	0	0	0	0
Taxicab Authority	0	0	0	0	0	0	0	0
TMCC PD	0	0	0	0	0	0	0	0
UNLV PD	0	0	0	0	0	0	0	0
UNR PD	0	0	0	0	0	0	0	0
Washoe SO	0	0	2	1	0	0	4	0
Washoe Co Schl PD	0	0	0	0	0	0	0	0
Wendover PD	0	0	2	2	0	0	1	1
White Pine SO	0	0	0	0	0	0	0	0
Winnemucca PD	0	0	0	0	0	0	1	1
Yerington PD	0	0	0	0	0	0	0	0
TOTALS	15	7	181	126	21	23	212	144

Nevada--Rape--Incidence Level Variation-UCR

November 2007

Agency	November 2007 Offenses	November 2007 Cleared	2007 YTD Offenses	2007 YTD Cleared	November 2006 Offenses	November 2006 Cleared	2006 YTD Offenses	2006 YTD Cleared
Boulder	0	0	0	0	0	0	2	1
Carlin PD	0	0	2	0	0	0	0	0
Carson SO	0	0	5	2	0	1	2	1
Churchill SO	1	0	8	4	0	0	9	15
Clark Co Schl PD	0	0	4	0	0	0	3	0
Douglas SO	1	0	5	3	2	0	22	14
Elko PD	2	0	13	2	0	0	7	2
Elko SO	0	0	8	2	1	1	6	2
Esmeralda SO	0	0	0	0	0	0	0	0
Eureka SO	0	0	0	0	0	0	1	0
Fallon PD	0	0	3	1	0	0	0	0
Henderson PD	7	2	61	21	2	1	61	35
Humboldt SO	0	0	0	0	0	0	0	0
Lander SO	0	0	18	13	1	0	10	8
Lincoln SO	0	0	0	0	0	0	0	0
Lovelock PD	0	0	2	0	0	0	0	2
LV Fire Dept	0	0	0	0	0	0	0	0
LV Metro	60	6	669	90	68	5	670	105
Lyon SO	0	0	3	1	0	0	4	2
Mesquite PD	0	0	1	2	1	0	2	1
Mineral SO	1	1	7	6	0	0	1	1
NLVPD	2	1	47	10	8	2	53	20
Nye SO	0	0	16	15	0	0	9	7
Pershing SO	0	0	9	5	3	0	10	0
Reno PD	12	4	87	17	10	1	94	17
Sparks PD	4	0	34	11	1	2	37	14
Storey SO	0	0	3	1	0	0	0	0
Taxicab Authority	0	0	0	0	0	0	0	0
TMCC PD	0	0	0	0	0	0	0	0
UNLV PD	0	0	1	1	0	0	0	0
UNR PD	0	0	1	0	0	0	1	0
Washoe SO	0	0	0	0	0	0	0	0
Washoe Co Schl PD	0	0	0	0	0	0	0	0
Wendover PD	0	0	0	0	0	0	2	1
White Pine SO	1	1	2	2	0	0	4	2
Winnemucca PD	0	0	3	3	0	0	2	1
Yerington PD	0	0	0	0	0	0	0	0
TOTALS	91	15	1,012	212	97	13	1,012	251

Nevada--Robbery--Incidence Level Variation--UCR

November 2007

Agency	November 2007 Offenses	November 2007 Cleared	2007 YTD Offenses	2007 YTD Cleared	November 2006 Offenses	November 2006 Cleared	2006 YTD Offenses	2006 YTD Cleared
Boulder	0	0	2	1	0	0	3	1
Carlin PD	0	0	0	0	0	0	0	0
Carson SO	0	0	20	12	2	1	20	12
Churchill SO	0	0	2	2	0	0	0	0
Clark Co Schl PD	0	0	31	22	5	2	45	18
Douglas SO	0	0	4	1	0	0	1	0
Elko PD	1	0	7	2	0	0	7	2
Elko SO	1	0	3	1	0	0	0	0
Esmeralda SO	0	0	0	0	0	0	0	0
Eureka SO	0	0	1	0	0	0	0	0
Fallon PD	0	1	2	1	0	0	3	1
Henderson PD	18	4	205	62	26	9	218	41
Humboldt SO	0	0	1	1	0	0	1	1
Lander SO	0	0	1	0	0	0	2	0
Lincoln SO	0	0	0	0	0	0	0	0
Lovelock PD	0	0	1	1	0	0	0	0
LV Fire Dept	0	0	0	0	0	0	0	0
LV Metro	450	85	4,779	970	501	76	4,928	790
Lyon SO	1	0	9	0	0	0	5	2
Mesquite PD	0	0	2	0	0	0	2	1
Mineral SO	0	0	0	0	0	0	0	0
NLVPD	64	8	586	110	52	9	531	83
Nye SO	1	0	18	9	0	0	10	5
Pershing SO	0	0	0	0	0	0	0	0
Reno PD	46	15	471	149	40	7	485	130
Sparks PD	13	0	123	53	11	6	110	39
Storey SO	0	0	0	0	0	0	0	0
Taxicab Authority	0	0	16	3	3	0	44	44
TMCC PD	0	0	0	0	0	0	0	0
UNLV PD	0	0	0	0	1	0	2	0
UNR PD	0	0	3	0	0	0	0	0
Washoe SO	0	0	11	3	0	0	20	5
Washoe Co Schl PD	0	0	0	0	0	0	2	2
Wendover PD	0	0	2	1	0	0	2	1
White Pine SO	0	0	1	0	0	0	1	1
Winnemucca PD	0	0	3	1	0	0	3	2
Yerington PD	0	0	0	0	0	0	0	0
TOTALS	595	113	6,304	1,405	641	110	6,445	1,181

Nevada--Aggravated Assault--Incidence Level Variation--UCR

November 2007

Agency	November 2007 Offenses	November 2007 Cleared	2007 YTD Offenses	2007 YTD Cleared	November 2006 Offenses	November 2006 Cleared	2006 YTD Offenses	2006 YTD Cleared
Boulder	1	1	13	7	1	1	10	8
Carlin PD	1	0	23	20	3	2	30	24
Carson SO	19	10	168	104	19	10	161	100
Churchill SO	0	1	29	21	1	2	38	37
Clark Co SchI PD	0	0	57	28	10	5	54	25
Douglas SO	3	1	52	24	4	4	53	30
Elko PD	1	1	24	11	2	0	30	13
Elko SO	2	2	11	5	0	0	12	11
Esmeralda SO	0	0	1	1	0	0	3	3
Eureka SO	2	2	8	7	0	0	5	4
Fallon PD	1	0	18	14	2	1	14	12
Henderson PD	10	5	263	157	23	17	266	160
Humboldt SO	4	4	57	56	2	2	44	42
Lander SO	0	0	14	10	9	7	27	23
Lincoln SO	0	0	1	1	0	0	3	3
Lovelock PD	0	0	7	6	1	1	8	6
LV Fire Dept	0	0	0	0	0	0	0	0
LV Metro	543	236	7,063	2,911	442	146	6,177	2,029
Lyon SO	10	7	59	43	7	5	69	46
Mesquite PD	2	2	15	15	3	2	23	18
Mineral SO	0	0	8	8	0	0	6	6
NLVPD	65	27	971	459	118	41	942	424
Nye SO	8	6	72	62	5	5	96	84
Pershing SO	1	1	27	16	2	1	55	36
Reno PD	104	59	824	427	66	41	776	388
Sparks PD	7	9	166	114	12	8	199	137
Storey SO	0	0	12	6	0	0	0	0
Taxicab Authority	8	5	76	52	5	3	91	23
TMCC PD	0	0	0	0	0	0	0	0
UNLV PD	0	0	6	4	0	0	3	1
UNR PD	0	0	2	0	0	0	5	3
Washoe SO	7	4	177	96	21	10	165	90
Washoe Co SchI PD	1	1	7	6	0	0	10	10
Wendover PD	1	1	5	4	1	1	9	8
White Pine SO	0	0	7	6	1	1	23	21
Winnemucca PD	1	1	18	16	2	1	12	10
Yerington PD	0	0	0	0	0	0	0	0
TOTALS	802	386	10,261	4,717	762	317	9,419	3,835

Nevada--All Assaults--Incidence Level Variation--UCR

November 2007

Agency	November 2007 Offenses	November 2007 Cleared	2007 YTD Offenses	2007 YTD Cleared	November 2006 Offenses	November 2006 Cleared	2006 YTD Offenses	2006 YTD Cleared
Boulder	4	2	29	14	3	2	30	20
Carlin PD	1	0	27	25	5	4	33	26
Carson SO	69	36	773	397	77	41	787	399
Churchill SO	23	15	213	161	6	13	211	195
Clark Co Schl PD	0	0	656	390	108	57	744	400
Douglas SO	69	17	686	274	32	18	562	419
Elko PD	27	20	337	162	28	12	324	190
Elko SO	15	9	131	69	12	9	105	75
Esmeralda SO	0	0	2	2	0	0	5	5
Eureka SO	3	3	15	13	0	0	8	6
Fallon PD	14	12	233	184	19	11	194	138
Henderson PD	221	149	2,763	1,903	207	139	2,583	1,618
Humboldt SO	6	6	69	68	2	2	52	49
Lander SO	0	0	90	76	14	12	110	92
Lincoln SO	1	0	21	17	1	0	19	27
Lovelock PD	5	4	56	49	6	7	57	56
LV Fire Dept	0	0	0	0	0	0	0	0
LV Metro	2,305	1,049	27,739	11,770	2,190	831	25,177	8,583
Lyon SO	53	33	534	306	59	27	542	281
Mesquite PD	17	14	222	167	8	6	201	178
Mineral SO	1	1	45	42	5	5	58	58
NLVPD	287	145	3,478	1,840	285	137	3,199	1,688
Nye SO	50	47	599	564	53	52	639	619
Pershing SO	1	1	34	20	3	1	63	39
Reno PD	373	202	4,676	2,459	355	187	4,485	2,349
Sparks PD	103	69	1,344	962	98	58	1,277	837
Storey SO	0	0	32	20	9	4	46	26
Taxicab Authority	8	5	80	52	5	3	94	23
TMCC PD	0	0	3	3	0	0	3	1
UNLV PD	0	0	32	21	3	1	33	16
UNR PD	1	0	21	10	0	0	5	3
Washoe SO	58	35	923	576	76	38	919	506
Washoe Co Schl PD	2	2	10	9	0	0	74	73
Wendover PD	4	3	75	66	4	4	80	81
White Pine SO	1	1	42	30	7	7	87	79
Winnemucca PD	6	6	106	93	16	13	85	73
Yerington PD	2	3	37	41	6	1	34	30
TOTALS	3,730	1,889	46,133	22,855	3,702	1,702	42,925	19,258

Nevada--Burglary--Incidence Level Variation--UCR

November 2007

Agency	November 2007 Offenses	November 2007 Cleared	2007 YTD Offenses	2007 YTD Cleared	November 2006 Offenses	November 2006 Cleared	2006 YTD Offenses	2006 YTD Cleared
Boulder	12	0	82	5	13	0	100	9
Carlin PD	1	0	12	3	0	0	18	3
Carson SO	17	0	262	48	30	9	270	74
Churchill SO	2	3	106	36	6	4	96	31
Clark Co Schl PD	0	0	151	26	29	5	234	37
Douglas SO	9	0	187	23	14	1	195	45
Elko PD	6	2	83	15	6	2	128	22
Elko SO	8	2	80	17	4	1	85	15
Esmeralda SO	0	0	1	1	0	0	1	1
Eureka SO	0	0	9	4	1	1	8	2
Fallon PD	2	2	42	17	6	2	52	12
Henderson PD	142	35	1,628	275	123	42	1,446	231
Humboldt SO	1	0	25	8	1	0	11	4
Lander SO	0	0	41	11	0	0	37	27
Lincoln SO	0	1	4	1	2	0	8	6
Lovelock PD	0	0	22	15	1	0	16	14
LV Fire Dept	0	0	0	0	0	0	0	0
LV Metro	1,217	65	13,937	800	1,186	64	13,619	816
Lyon SO	16	3	212	22	19	0	191	28
Mesquite PD	0	0	30	7	4	0	14	4
Mineral SO	1	0	13	3	1	1	22	7
NLVPD	172	11	2,152	139	239	18	2,314	155
Nye SO	18	7	316	46	30	15	249	51
Pershing SO	2	1	21	7	0	0	35	6
Reno PD	168	14	1,717	159	218	14	1,911	154
Sparks PD	64	17	758	223	79	19	800	215
Storey SO	0	0	17	2	0	0	14	3
Taxicab Authority	0	0	2	0	0	0	0	0
TMCC PD	0	0	15	1	0	0	3	0
UNLV PD	0	0	53	4	4	0	60	2
UNR PD	1	0	22	2	1	0	13	1
Washoe SO	61	8	509	74	47	6	511	49
Washoe Co Schl PD	0	0	6	3	0	0	23	4
Wendover PD	2	0	29	6	5	3	48	15
White Pine SO	2	0	73	7	2	1	52	8
Winnemucca PD	4	2	31	11	2	1	32	19
Yerington PD	2	1	37	36	9	5	34	27
TOTALS	1,930	174	22,685	2,057	2,082	214	22,650	2,097

Nevada--Larceny--Incidence Level Variation--UCR

November 2007

Agency	November 2007 Offenses	November 2007 Cleared	2007 YTD Offenses	2007 YTD Cleared	November 2006 Offense	November 2006 Cleared	2006 YTD Offenses	2006 YTD Cleared
Boulder	7	0	75	7	8	1	117	9
Carlin PD	0	0	14	7	0	0	9	2
Carson SO	56	9	650	132	68	12	737	164
Churchill SO	16	6	137	39	9	8	133	49
Clark Co Schl PD	0	0	728	109	110	17	833	121
Douglas SO	28	4	614	89	56	8	675	121
Elko PD	27	3	366	30	23	3	395	35
Elko SO	3	1	75	12	3	0	84	10
Esmeralda SO	0	0	2	0	0	0	5	4
Eureka SO	0	0	12	3	3	1	11	2
Fallon PD	18	7	281	61	25	4	301	50
Henderson PD	207	57	3,001	777	288	62	3,305	538
Humboldt SO	0	0	26	8	0	0	28	12
Lander SO	0	0	48	20	2	0	49	29
Lincoln SO	2	0	21	4	4	0	28	5
Lovelock PD	3	0	27	17	2	2	17	12
LV Fire Dept	0	0	0	0	0	0	0	0
LV Metro	2,041	506	25,021	4,565	2,306	442	24,476	4,684
Lyon SO	32	2	430	68	41	9	407	68
Mesquite PD	27	10	352	96	23	7	249	70
Mineral SO	1	0	12	2	3	1	18	4
NLVPD	308	74	3,315	612	308	42	3,158	469
Nye SO	37	18	458	161	49	17	427	137
Pershing SO	2	0	21	1	5	3	24	9
Reno PD	528	161	6,039	1,365	665	140	6,440	1,354
Sparks PD	177	41	2,224	536	194	23	1,912	267
Storey SO	0	0	30	2	8	0	43	3
Taxicab Authority	5	0	85	5	23	1	387	13
TMCC PD	0	0	6	0	0	0	11	0
UNLV PD	32	1	265	9	26	1	231	14
UNR PD	7	0	117	2	21	1	148	4
Washoe SO	80	13	874	113	72	10	755	72
Washoe Co Schl PD	9	4	118	37	9	5	147	46
Wendover PD	10	3	91	24	5	3	125	31
White Pine SO	6	0	46	7	10	3	106	33
Winnemucca PD	4	1	62	16	3	1	59	19
Yerington PD	1	0	14	13	3	6	14	12
TOTALS	3,674	921	45,657	8,949	4,375	833	45,864	8,472

Nevada--MV Theft--Incidence Level Variation--UCR

November 2007

Agency	November 2007 Offenses	November 2007 Cleared	2007 YTD Offenses	2007 YTD Cleared	November 2006 Offenses	November 2006 Cleared	2006 YTD Offenses	2006 YTD Cleared
Boulder	2	0	11	0	0	0	21	1
Carlin PD	0	0	3	2	0	0	5	1
Carson SO	10	4	82	25	18	7	120	39
Churchill SO	2	2	12	9	2	3	16	8
Clark Co Schl PD	0	0	41	17	3	0	45	11
Douglas SO	6	1	50	8	3	1	59	36
Elko PD	3	1	42	10	1	0	49	6
Elko SO	0	0	18	5	1	0	17	2
Esmeralda SO	0	0	0	0	0	0	1	1
Eureka SO	1	0	3	2	0	0	4	1
Fallon PD	3	0	19	4	1	1	25	9
Henderson PD	106	5	1,199	49	96	3	1,345	38
Humboldt SO	1	1	5	4	1	1	5	4
Lander SO	0	0	4	2	1	0	7	6
Lincoln SO	0	0	10	1	1	0	9	5
Lovelock PD	0	0	4	2	1	1	3	2
LV Fire Dept	0	0	0	0	0	0	0	0
LV Metro	1,064	126	15,319	1,495	1,516	139	18,183	1,657
Lyon SO	2	2	64	18	4	0	74	30
Mesquite PD	6	1	41	9	2	1	51	13
Mineral SO	0	0	4	1	1	0	5	2
NLVPD	159	9	2,049	87	224	8	2,429	99
Nye SO	9	7	141	39	15	9	163	74
Pershing SO	0	0	0	0	0	0	2	1
Reno PD	88	11	1,008	157	120	14	1,484	178
Sparks PD	30	4	321	54	30	8	408	75
Storey SO	0	0	5	0	1	0	3	0
Taxicab Authority	0	0	1	0	0	0	11	0
TMCC PD	0	0	0	0	0	0	0	0
UNLV PD	0	0	57	6	7	0	42	2
UNR PD	1	0	5	0	1	0	12	0
Washoe SO	14	2	224	43	17	1	201	48
Washoe Co Schl PD	0	0	0	0	1	1	1	1
Wendover PD	0	0	6	5	2	2	18	15
White Pine SO	1	0	7	2	5	2	30	13
Winnemucca PD	2	0	11	1	1	1	13	5
Yerington PD	0	0	0	0	0	0	0	0
TOTALS	1,510	176	20,766	2,057	2,076	203	24,861	2,383

Nevada--Arson--Incidence Level Variation--UCR

November 2007

Agency	November 2007 Offenses	November 2007 Cleared	2007 YTD Offenses	2007 YTD Cleared	November 2006 Offenses	November 2006 Cleared	2006 YTD Offenses	2006 YTD Cleared
Boulder	1	0	4	1	0	0	3	0
Carlin PD	0	0	1	1	0	0	0	0
Carson SO	2	0	22	11	2	1	8	4
Churchill SO	0	0	10	5	1	1	2	2
Clark Co Schl PD	0	0	44	8	3	0	68	22
Douglas SO	0	0	10	1	1	0	6	4
Elko PD	0	0	1	0	0	0	8	1
Elko SO	0	0	1	0	0	0	3	1
Esmeralda SO	0	0	2	1	0	0	0	0
Eureka SO	0	0	1	1	0	0	0	0
Fallon PD	1	0	7	1	0	0	0	0
Henderson PD	2	1	60	17	9	2	73	13
Humboldt SO	0	0	2	0	0	0	1	1
Lander SO	0	0	0	0	0	0	0	0
Lincoln SO	0	0	0	0	0	0	1	2
Lovelock PD	0	0	0	0	0	0	0	0
LV Fire Dept	9	4	65	13	5	3	67	10
LV Metro	22	0	233	0	11	0	272	34
Lyon SO	1	0	9	3	1	0	16	4
Mesquite PD	0	0	0	0	0	0	0	0
Mineral SO	0	0	0	0	0	0	1	1
NLVPD	2	1	32	6	4	0	52	8
Nye SO	0	0	18	5	0	0	29	22
Pershing SO	0	0	0	0	0	0	0	0
Reno PD	5	1	21	5	2	0	33	3
Sparks PD	1	0	20	4	1	1	18	5
Storey SO	0	0	1	0	0	0	0	0
Taxicab Authorit	0	0	0	0	0	0	0	0
TMCC PD	0	0	0	0	0	0	0	0
UNLV PD	0	0	2	0	0	0	1	0
UNR PD	0	0	1	0	0	0	0	0
Washoe SO	0	0	3	0	1	1	9	1
Washoe CO Schl	0	0	12	3	0	0	17	2
Wendover PD	0	0	1	0	0	0	3	2
White Pine SO	0	0	1	1	0	0	1	0
Winnemucca PD	0	0	1	0	0	0	7	6
Yerington PD	0	0	0	0	0	0	0	0
TOTALS	46	7	585	87	41	9	699	148

Stolen/Recovered Property Report

November 2007

Property Type	Boulder PD	Carlin PD	Carson SO	Churchill SO	Clark Co Schi PD	Douglas SO	Elko PD	Elko SO	Esmeralda SO
Currency									
Stolen	\$6,304	\$100	\$4,374	\$11,471	\$0	\$4,387	\$640	\$0	\$0
Recovered	\$1	\$0	\$0	\$0	\$0	\$85	\$0	\$0	\$0
% Recovered	0.0%	0.0%	0.0%	0.0%	0.0%	1.9%	0.0%	0.0%	0.0%
Jewelry									
Stolen	\$50,111	\$550	\$4,352	\$2,600	\$0	\$21,175	\$520	\$0	\$0
Recovered	\$30,000	\$0	\$0	\$0	\$0	\$0	\$0	\$0	\$0
% Recovered	59.9%	0.0%	0.0%	0.0%	0.0%	0.0%	0.0%	0.0%	0.0%
Clothing									
Stolen	\$290	\$0	\$640	\$70	\$0	\$1,328	\$1,306	\$0	\$0
Recovered	\$0	\$0	\$0	\$0	\$0	\$0	\$138	\$0	\$0
% Recovered	0.0%	0.0%	0.0%	0.0%	0.0%	0.0%	10.6%	0.0%	0.0%
Motor Vehicle									
Stolen	\$9,000	\$0	\$53,801	\$70,000	\$0	\$21,800	\$13,500	\$0	\$0
Recovered	\$6,000	\$0	\$40,502	\$65,000	\$0	\$63,290	\$2,500	\$0	\$0
% Recovered	66.7%	0.0%	75.3%	92.9%	0.0%	290.3%	18.5%	0.0%	0.0%
Office Equipment									
Stolen	\$0	\$0	\$2,030	\$0	\$0	\$0	\$6,500	\$0	\$0
Recovered	\$0	\$0	\$0	\$0	\$0	\$0	\$3,000	\$0	\$0
% Recovered	0.0%	0.0%	0.0%	0.0%	0.0%	0.0%	46.2%	0.0%	0.0%
TV, VCR, Camera, Etc.									
Stolen	\$0	\$350	\$4,091	\$100	\$0	\$2,620	\$600	\$0	\$0
Recovered	\$0	\$0	\$400	\$0	\$0	\$200	\$0	\$0	\$0
% Recovered	0.0%	0.0%	9.8%	0.0%	0.0%	7.6%	0.0%	0.0%	0.0%
Firearm									
Stolen	\$0	\$0	\$100	\$375	\$0	\$0	\$0	\$0	\$0
Recovered	\$0	\$0	\$0	\$375	\$0	\$0	\$0	\$0	\$0
% Recovered	0.0%	0.0%	0.0%	100.0%	0.0%	0.0%	0.0%	0.0%	0.0%
Household Goods									
Stolen	\$0	\$0	\$215	\$2,640	\$0	\$130	\$0	\$0	\$0
Recovered	\$0	\$0	\$0	\$2,640	\$0	\$0	\$0	\$0	\$0
% Recovered	0.0%	0.0%	0.0%	100.0%	0.0%	0.0%	0.0%	0.0%	0.0%
Consumable Goods									
Stolen	\$15	\$0	\$3	\$140	\$0	\$137	\$871	\$2	\$0
Recovered	\$0	\$0	\$3	\$44	\$0	\$110	\$0	\$2	\$0
% Recovered	0.0%	0.0%	100.0%	31.4%	0.0%	80.3%	0.0%	100.0%	0.0%
Livestock									
Stolen	\$0	\$0	\$700	\$0	\$0	\$0	\$0	\$0	\$0
Recovered	\$0	\$0	\$0	\$0	\$0	\$0	\$0	\$0	\$0
% Recovered	0.0%	0.0%	0.0%	0.0%	0.0%	0.0%	0.0%	0.0%	0.0%
Misc.									
Stolen	\$880	\$0	\$33,392	\$46,935	\$0	\$20,457	\$2,921	\$2,151	\$0
Recovered	\$0	\$0	\$3,128	\$250	\$0	\$20	\$865	\$50	\$0
% Recovered	0.0%	0.0%	9.4%	0.5%	0.0%	0.1%	29.6%	2.3%	0.0%
TOTALS									
Stolen	\$66,600	\$1,000	\$103,698	\$134,331	\$0	\$72,034	\$26,858	\$2,153	\$0
Recovered	\$36,001	\$0	\$44,033	\$68,309	\$0	\$63,705	\$6,503	\$52	\$0
% Recovered	54.1%	0.0%	42.5%	50.9%	0.0%	88.4%	24.2%	2.4%	0.0%

Stolen/Recovered Property Report

November

Property Type	Eureka SO	Fallon PD	Henderson PD	Humboldt SO	Lander SO	Las Vegas Metro	Lincoln SO	Lovelock PD	Lyon SO
Currency									
Stolen	\$0	\$350	\$49,240	\$0	\$0	\$1,868,822	\$4,897	\$2,000	\$755
Recovered	\$0	\$0	\$0	\$0	\$0	\$6,486	\$0	\$0	\$0
% Recovered	0.0%	0.0%	0.0%	0.0%	0.0%	0.3%	0.0%	0.0%	0.0%
Jewelry									
Stolen	\$0	\$0	\$454,887	\$0	\$0	\$2,761,747	\$0	\$0	\$20,710
Recovered	\$0	\$0	\$622	\$0	\$0	\$43,114	\$0	\$0	\$0
% Recovered	0.0%	0.0%	0.1%	0.0%	0.0%	1.6%	0.0%	0.0%	0.0%
Clothing									
Stolen	\$0	\$22	\$28,668	\$0	\$0	\$508,737	\$0	\$0	\$0
Recovered	\$0	\$22	\$2,709	\$0	\$0	\$33,335	\$0	\$0	\$0
% Recovered	0.0%	100.0%	9.4%	0.0%	0.0%	6.6%	0.0%	0.0%	0.0%
Motor Vehicle									
Stolen	\$5,965	\$1,500	\$1,500,194	\$5,000	\$0	\$2,567,012	\$0	\$0	\$2,000
Recovered	\$5,965	\$0	\$817,095	\$5,000	\$0	\$1,685,010	\$0	\$0	\$13,000
% Recovered	100.0%	0.0%	54.5%	100.0%	0.0%	65.6%	0.0%	0.0%	650.0%
Office Equipment									
Stolen	\$0	\$0	\$40,841	\$0	\$0	\$662,150	\$0	\$0	\$1,359
Recovered	\$0	\$0	\$1,400	\$0	\$0	\$5,270	\$0	\$0	\$0
% Recovered	0.0%	0.0%	3.4%	0.0%	0.0%	0.8%	0.0%	0.0%	0.0%
TV, VCR, Camera, Etc.									
Stolen	\$0	\$0	\$238,056	\$0	\$0	\$1,176,857	\$0	\$0	\$860
Recovered	\$0	\$0	\$6,615	\$0	\$0	\$18,244	\$0	\$0	\$0
% Recovered	0.0%	0.0%	2.8%	0.0%	0.0%	1.6%	0.0%	0.0%	0.0%
Firearm									
Stolen	\$0	\$100	\$6,225	\$0	\$0	\$67,387	\$0	\$0	\$2,650
Recovered	\$0	\$0	\$700	\$0	\$0	\$7,081	\$0	\$0	\$0
% Recovered	0.0%	0.0%	11.2%	0.0%	0.0%	10.5%	0.0%	0.0%	0.0%
Household Goods									
Stolen	\$0	\$0	\$34,715	\$0	\$0	\$252,547	\$40	\$300	\$200
Recovered	\$0	\$0	\$40	\$0	\$0	\$175	\$0	\$0	\$0
% Recovered	0.0%	0.0%	0.1%	0.0%	0.0%	0.1%	0.0%	0.0%	0.0%
Consumable Goods									
Stolen	\$0	\$12	\$5,898	\$0	\$0	\$64,583	\$0	\$0	\$1,071
Recovered	\$0	\$0	\$3,415	\$0	\$0	\$7,494	\$0	\$0	\$21
% Recovered	0.0%	0.0%	57.9%	0.0%	0.0%	11.6%	0.0%	0.0%	2.0%
Livestock									
Stolen	\$0	\$0	\$0	\$0	\$0	\$0	\$0	\$0	\$0
Recovered	\$0	\$0	\$0	\$0	\$0	\$0	\$0	\$0	\$0
% Recovered	0.0%	0.0%	0.0%	0.0%	0.0%	0.0%	0.0%	0.0%	0.0%
Misc.									
Stolen	\$0	\$2,250	\$376,108	\$3,000	\$0	\$2,143,315	\$0	\$1,700	\$18,823
Recovered	\$0	\$243	\$65,736	\$0	\$0	\$266,179	\$1,070	\$0	\$300
% Recovered	0.0%	10.8%	17.5%	0.0%	0.0%	12.4%	0.0%	0.0%	1.6%
TOTALS									
Stolen	\$5,965	\$4,234	\$2,734,832	\$8,000	\$0	\$12,073,157	\$4,937	\$4,000	\$48,428
Recovered	\$5,965	\$265	\$898,332	\$5,000	\$0	\$2,072,388	\$1,070	\$0	\$13,321
% Recovered	100.0%	6.3%	32.8%	62.5%	0.0%	17.2%	21.7%	0.0%	27.5%

Stolen/Recovered Property Report

November 2007

Property Type	Mesquite PD	Mineral SO	NLVPD	Nye SO	Pershing SO	Reno PD	Sparks PD	Storey SO	Taxicab	TMCC PD
Currency										
Stolen	\$931	\$200	\$54,914	\$28,467	\$0	\$65,624	\$30,428	\$0	\$170	\$0
Recovered	\$95	\$0	\$36	\$21,000	\$0	\$74	\$733	\$0	\$0	\$0
% Recovered	10.2%	0.0%	0.1%	73.8%	0.0%	0.1%	2.4%	0.0%	0.0%	0.0%
Jewelry										
Stolen	\$0	\$0	\$166,179	\$180	\$0	\$196,929	\$56,552	\$0	\$0	\$0
Recovered	\$0	\$0	\$8,711	\$0	\$0	\$11,262	\$784	\$0	\$0	\$0
% Recovered	0.0%	0.0%	5.2%	0.0%	0.0%	5.7%	1.4%	0.0%	0.0%	0.0%
Clothing										
Stolen	\$72	\$0	\$56,144	\$0	\$0	\$9,067	\$3,739	\$0	\$0	\$0
Recovered	\$72	\$0	\$1,284	\$0	\$0	\$6,345	\$1,322	\$0	\$0	\$0
% Recovered	100.0%	0.0%	2.3%	0.0%	0.0%	70.0%	35.4%	0.0%	0.0%	0.0%
Motor Vehicle										
Stolen	\$37,500	\$0	\$1,998,825	\$82,000	\$0	\$718,229	\$319,620	\$0	\$0	\$0
Recovered	\$10,000	\$0	\$1,408,905	\$70,000	\$0	\$537,404	\$130,050	\$0	\$0	\$0
% Recovered	26.7%	0.0%	70.5%	85.4%	0.0%	74.8%	40.7%	0.0%	0.0%	0.0%
Office Equipment										
Stolen	\$930	\$0	\$530	\$0	\$0	\$98,009	\$32,708	\$0	\$0	\$0
Recovered	\$0	\$0	\$0	\$0	\$0	\$855	\$0	\$0	\$0	\$0
% Recovered	0.0%	0.0%	0.0%	0.0%	0.0%	0.9%	0.0%	0.0%	0.0%	0.0%
TV, VCR, Camera, Etc.										
Stolen	\$0	\$0	\$304,823	\$9,868	\$179	\$93,271	\$48,183	\$0	\$3,600	\$0
Recovered	\$0	\$0	\$4,770	\$268	\$159	\$5,679	\$586	\$0	\$0	\$300
% Recovered	0.0%	0.0%	1.6%	2.7%	88.8%	6.1%	1.2%	0.0%	0.0%	0.0%
Firearm										
Stolen	\$0	\$0	\$13,328	\$1,590	\$0	\$10,345	\$9,644	\$0	\$0	\$0
Recovered	\$0	\$0	\$0	\$0	\$0	\$550	\$1,910	\$0	\$0	\$0
% Recovered	0.0%	0.0%	0.0%	0.0%	0.0%	5.3%	19.8%	0.0%	0.0%	0.0%
Household Goods										
Stolen	\$500	\$0	\$29,414	\$0	\$0	\$7,151	\$28,413	\$0	\$0	\$0
Recovered	\$0	\$0	\$13	\$0	\$0	\$34	\$63	\$0	\$0	\$0
% Recovered	0.0%	0.0%	0.0%	0.0%	0.0%	0.5%	0.2%	0.0%	0.0%	0.0%
Consumable Goods										
Stolen	\$30	\$0	\$6,509	\$2,553	\$0	\$1,390	\$1,541	\$0	\$0	\$0
Recovered	\$30	\$0	\$1,032	\$53	\$0	\$1,276	\$290	\$0	\$0	\$0
% Recovered	100.0%	0.0%	15.9%	2.1%	0.0%	91.8%	18.8%	0.0%	0.0%	0.0%
Livestock										
Stolen	\$0	\$0	\$0	\$1,500	\$0	\$0	\$0	\$0	\$0	\$0
Recovered	\$0	\$0	\$0	\$0	\$0	\$0	\$0	\$0	\$0	\$0
% Recovered	0.0%	0.0%	0.0%	0.0%	0.0%	0.0%	0.0%	0.0%	0.0%	0.0%
Misc.										
Stolen	\$17,940	\$0	\$269,168	\$28,461	\$0	\$318,692	\$51,399	\$0	\$0	\$0
Recovered	\$530	\$0	\$1,419	\$4,060	\$0	\$4,726	\$3,560	\$0	\$0	\$0
% Recovered	3.0%	0.0%	0.5%	14.3%	0.0%	1.5%	6.9%	0.0%	0.0%	0.0%
TOTALS										
Stolen	\$57,903	\$200	\$2,899,834	\$154,619	\$179	\$1,518,707	\$582,227	\$0	\$3,770	\$0
Recovered	\$10,727	\$0	\$1,426,170	\$95,381	\$159	\$568,205	\$139,298	\$0	\$0	\$300
% Recovered	18.5%	0.0%	49.2%	61.7%	88.8%	37.4%	23.9%	0.0%	0.0%	0.0%

Stolen/Recovered Property Report

November

Property Type	UNLV PD	UNR PD	Washoe SO	Washoe Co Schl PD	Wendover PD	White Pine SO	Winnemucca PD	Yerington PD	Total By Property
Currency									
Stolen	\$112	\$2,013	\$7,988	\$0	\$866	\$550	\$2,195	\$0	\$2,147,798
Recovered	\$0	\$0	\$6	\$0	\$0	\$0	\$0	\$0	\$28,516
% Recovered	0.0%	0.0%	0.1%	0.0%	0.0%	0.0%	0.0%	0.0%	1.3%
Jewelry									
Stolen	\$6,000	\$0	\$65,872	\$0	\$0	\$0	\$0	\$0	\$3,808,364
Recovered	\$0	\$0	\$350	\$0	\$0	\$0	\$0	\$0	\$94,843
% Recovered	0.0%	0.0%	0.5%	0.0%	0.0%	0.0%	0.0%	0.0%	2.5%
Clothing									
Stolen	\$574	\$0	\$3,268	\$0	\$337	\$0	\$0	\$0	\$614,262
Recovered	\$0	\$0	\$0	\$0	\$0	\$0	\$0	\$0	\$45,227
% Recovered	0.0%	0.0%	0.0%	0.0%	0.0%	0.0%	0.0%	0.0%	7.4%
Motor Vehicle									
Stolen	\$0	\$15,000	\$95,402	\$0	\$0	\$5,000	\$500	\$0	\$7,521,848
Recovered	\$0	\$15,000	\$62,151	\$0	\$0	\$5,000	\$0	\$0	\$4,941,872
% Recovered	0.0%	100.0%	65.1%	0.0%	0.0%	100.0%	0.0%	0.0%	65.7%
Office Equipment									
Stolen	\$0	\$80	\$21,248	\$500	\$300	\$0	\$1,700	\$0	\$868,885
Recovered	\$0	\$0	\$0	\$0	\$0	\$0	\$0	\$0	\$10,525
% Recovered	0.0%	0.0%	0.0%	0.0%	0.0%	0.0%	0.0%	0.0%	1.2%
TV, VCR, Camera, Etc.									
Stolen	\$16,629	\$280	\$24,957	\$500	\$1,171	\$1,100	\$0	\$0	\$1,928,095
Recovered	\$0	\$0	\$8	\$150	\$0	\$0	\$0	\$0	\$37,379
% Recovered	0.0%	0.0%	0.0%	30.0%	0.0%	0.0%	0.0%	0.0%	1.9%
Firearm									
Stolen	\$0	\$0	\$4,850	\$0	\$0	\$0	\$0	\$375	\$116,969
Recovered	\$0	\$0	\$0	\$0	\$0	\$0	\$0	\$0	\$10,616
% Recovered	0.0%	0.0%	0.0%	0.0%	0.0%	0.0%	0.0%	0.0%	9.1%
Household Goods									
Stolen	\$0	\$0	\$25,080	\$0	\$0	\$0	\$0	\$0	\$381,345
Recovered	\$0	\$0	\$0	\$0	\$0	\$0	\$0	\$0	\$2,965
% Recovered	0.0%	0.0%	0.0%	0.0%	0.0%	0.0%	0.0%	0.0%	0.8%
Consumable Goods									
Stolen	\$0	\$0	\$404	\$0	\$299	\$0	\$21	\$0	\$85,479
Recovered	\$0	\$0	\$15	\$0	\$0	\$0	\$13	\$0	\$13,798
% Recovered	0.0%	0.0%	3.7%	0.0%	0.0%	0.0%	61.9%	0.0%	16.1%
Livestock									
Stolen	\$0	\$0	\$0	\$0	\$0	\$0	\$0	\$0	\$2,200
Recovered	\$0	\$0	\$0	\$0	\$0	\$0	\$0	\$0	\$0
% Recovered	0.0%	0.0%	0.0%	0.0%	0.0%	0.0%	0.0%	0.0%	0.0%
Misc.									
Stolen	\$7,922	\$786	\$127,422	\$2,995	\$0	\$1,455	\$300	\$415	\$3,478,887
Recovered	\$0	\$0	\$2,845	\$0	\$0	\$0	\$0	\$0	\$354,981
% Recovered	0.0%	0.0%	2.2%	0.0%	0.0%	0.0%	0.0%	0.0%	10.2%
TOTALS									
Stolen	\$31,237	\$18,159	\$376,491	\$3,995	\$2,973	\$8,105	\$4,716	\$790	\$20,954,132
Recovered	\$0	\$15,000	\$65,375	\$150	\$0	\$5,000	\$13	\$0	\$5,540,722
% Recovered	0.0%	82.6%	17.4%	3.8%	0.0%	61.7%	0.3%	0.0%	26.4%

Nevada--Assaults on Officers by Agency--UCR

November 2007								
Agency	November 2007 Offenses	November 2007 Cleared	2007 YTD Offenses	2007 YTD Cleared	November 2006 Offenses	November 2006 Cleared	2006 YTD Offenses	2006 YTD Cleared
Boulder	0	0	0	0	0	0	0	0
Carlin PD	0	0	2	1	0	0	1	0
Carson SO	2	2	21	21	0	0	10	9
Churchill SO	0	0	6	6	0	0	12	11
ClrkSchIDst PD	0	0	9	9	0	0	10	9
Douglas SO	2	2	18	17	0	0	7	7
Elko PD	0	0	10	9	1	0	8	4
Elko SO	0	0	0	0	0	0	0	0
Esmeralda SO	0	0	0	0	0	0	0	0
Eureka SO	0	0	0	0	0	0	2	2
Fallon PD	0	0	1	1	0	0	1	1
Henderson PD	1	1	22	22	1	1	10	8
Highway Patrol	0	0	17	17	2	2	37	34
Humboldt SO	2	2	3	3	0	0	0	0
Lander SO	0	0	0	0	0	0	0	0
Lincoln SO	0	0	0	0	0	0	0	0
Lovelock PD	0	0	0	0	0	0	0	0
LV Fire Dept	0	0	0	0	0	0	0	0
LV Metro	24	19	316	294	26	25	366	350
Lyon SO	1	1	5	5	1	0	12	10
Mesquite PD	0	0	0	0	0	0	0	0
Mineral SO	0	0	4	4	0	0	0	0
NV Div Investigations	0	0	0	0	0	0	0	0
NLVDPD	0	0	43	41	3	3	31	29
Nye SO	1	0	12	2	1	1	11	6
Pershing SO	0	0	0	0	0	0	0	0
Reno PD	6	0	42	25	0	0	17	17
Sparks PD	1	1	13	13	0	0	8	7
Storey SO	0	0	0	0	0	0	0	0
Taxicab Authority	0	0	0	0	0	0	0	0
TMCC PD	0	0	0	0	0	0	0	0
UNLV PD	0	0	2	2	1	1	1	1
UNR PD	0	0	4	4	0	0	0	0
Washoe SO	0	0	0	0	0	0	0	0
Washoe Co Schl PD	0	0	2	2	0	0	0	0
Wendover PD	0	0	2	2	1	0	5	4
White Pine SO	0	0	1	1	0	0	2	1
Winnemucca PD	0	0	1	1	0	0	2	2
Yerington PD	0	0	0	0	0	0	0	0
TOTALS	40	28	556	502	37	33	553	512

Nevada -- Assaults by Agency/Weapon/Assignment -- UCR

November 2007

Table 16

Agency	Total Assaults	Number Cleared	Firearm	Knife / Cutting Device	Other Danger. Weapon	Hands, Fists, Feet, Etc.	2-Officer Vehicle	1-Officer Vehicle-Alone	1-Officer Vehicle-Assisted	Det./Spec. Assign. - Alone	Det./Spec. Assign. - Assisted	Other-Alone	Other-Assisted
Boulder City PD	0	0	0	0	0	0	0	0	0	0	0	0	0
Carlin PD	0	0	0	0	0	0	0	0	0	0	0	0	0
Carson City SO	2	2	1	0	0	1	1	1	0	0	0	0	0
Churchill Co SO	0	0	0	0	0	0	0	0	0	0	0	0	0
Clark School Dist PD	0	0	0	0	0	0	0	0	0	0	0	0	0
Douglas Co SO	2	2	0	0	0	2	0	0	0	0	0	0	2
Elko PD	0	0	0	0	0	0	0	0	0	0	0	0	0
Elko Co SO	0	0	0	0	0	0	0	0	0	0	0	0	0
Esmeralda Co SO	0	0	0	0	0	0	0	0	0	0	0	0	0
Eureka Co SO	0	0	0	0	0	0	0	0	0	0	0	0	0
Fallon PD	0	0	0	0	0	0	0	0	0	0	0	0	0
Henderson PD	1	1	0	0	0	1	1	0	0	0	0	0	0
NV Highway Patrol	0	0	0	0	0	0	0	0	0	0	0	0	0
Humboldt Co SO	2	2	0	0	0	2	0	0	0	0	0	0	2
Lander Co SO	0	0	0	0	0	0	0	0	0	0	0	0	0
Lincoln Co SO	0	0	0	0	0	0	0	0	0	0	0	0	0
Lovelock PD	0	0	0	0	0	0	0	0	0	0	0	0	0
Las Vegas Fire Dept	0	0	0	0	0	0	0	0	0	0	0	0	0
Las Vegas Metro PD	24	19	5	0	12	7	13	1	8	0	2	0	0
Lyon Co SO	1	1	0	0	0	1	0	0	1	0	0	0	0
Mesquite PD	0	0	0	0	0	0	0	0	0	0	0	0	0
Mineral Co SO	0	0	0	0	0	0	0	0	0	0	0	0	0
NV Div of Investigations	0	0	0	0	0	0	0	0	0	0	0	0	0
North Las Vegas PD	0	0	0	0	0	0	0	0	0	0	0	0	0
Nye Co SO	1	0	0	0	0	1	0	0	1	0	0	0	0
Pershing Co SO	0	0	0	0	0	0	0	0	0	0	0	0	0
Reno PD	6	0	0	0	4	2	3	3	0	0	0	0	0
Sparks PD	1	1	0	0	0	1	0	0	1	0	0	0	0
Storey Co SO	0	0	0	0	0	0	0	0	0	0	0	0	0
Taxi Authority	0	0	0	0	0	0	0	0	0	0	0	0	0
TMCC PD	0	0	0	0	0	0	0	0	0	0	0	0	0
UNLV PD	0	0	0	0	0	0	0	0	0	0	0	0	0
UNR PD	0	0	0	0	0	0	0	0	0	0	0	0	0
Washoe Co SO	0	0	0	0	0	0	0	0	0	0	0	0	0
Washoe Co School PD	0	0	0	0	0	0	0	0	0	0	0	0	0
West Wendover PD	0	0	0	0	0	0	0	0	0	0	0	0	0
White Pine Co SO	0	0	0	0	0	0	0	0	0	0	0	0	0
Winnemucca PD	0	0	0	0	0	0	0	0	0	0	0	0	0
Yerington PD	0	0	0	0	0	0	0	0	0	0	0	0	0
TOTALS	40	28	6	0	16	18	18	5	11	0	2	0	4

28

Nevada -- Officer Assaults by Activity/Weapon/Assignment -- UCR

November 2007

Table 17

ACTIVITY TYPE	Total Assaults	Number Cleared	Firearm	Knife / Cutting Device	Other Danger. Weapon	Hands, Fists, Feet, Etc.	2-Officer Vehicle	1-Officer Vehicle- Alone	1-Officer Vehicle- Assisted	Det./Spec. Assign.- Alone	Det./Spec. Assign.- Assisted	Other- Alone	Other- Assisted
DOMESTIC / OTHER DISTURBANCE	24	12	6	0	9	9	10	4	9	0	0	0	1
BURGLARY IN PROGRESS	0	0	0	0	0	0	0	0	0	0	0	0	0
ROBBERY IN PROGRESS	0	0	0	0	0	0	0	0	0	0	0	0	0
ATTEMPTING OTHER ARREST	1	1	0	0	0	1	1	0	0	0	0	0	0
CIVIL DISORDER	0	0	0	0	0	0	0	0	0	0	0	0	0
HANDLING PRISONER	5	5	0	0	0	5	0	0	1	0	2	0	2
INVEST. SUSP. PERSONS / CIRCUM.	1	1	0	0	1	0	1	0	0	0	0	0	0
AMBUSH-NO WARNING	0	0	0	0	0	0	0	0	0	0	0	0	0
MENTALLY DERANGED	0	0	0	0	0	0	0	0	0	0	0	0	0
TRAFFIC PURSUITS / STOPS	7	7	0	0	6	1	6	1	0	0	0	0	0
ALL OTHER	2	2	0	0	0	2	0	0	1	0	0	0	1
TOTALS	40	28	6	0	16	18	18	5	11	0	2	0	4

29

Nevada--Assaults with Injury/without Injury--UCR

November 2007

Agency	Total Assaults by weapon	Firearm		Cutting Instruments		Other Dangerous weapons		Hands, Fists, Feet, Etc.			
		With personal injury	Without personal injury	With personal injury	Without personal injury	With personal injury	Without personal injury	With personal injury	Without personal injury		
Boulder City PD	0	0	0	0	0	0	0	0	0	0	0
Carlin PD	0	0	0	0	0	0	0	0	0	0	0
Carson City SO	2	0	2	0	1	0	0	0	0	0	1
Churchill Co SO	0	0	0	0	0	0	0	0	0	0	0
Clark Co Schl Dist PD	0	0	0	0	0	0	0	0	0	0	0
Douglas Co SO	2	2	0	0	0	0	0	0	0	2	0
Elko Co SO	0	0	0	0	0	0	0	0	0	0	0
Elko PD	0	0	0	0	0	0	0	0	0	0	0
Esmeralda Co SO	0	0	0	0	0	0	0	0	0	0	0
Eureka Co SO	0	0	0	0	0	0	0	0	0	0	0
Fallon PD	0	0	0	0	0	0	0	0	0	0	0
Henderson PD	1	1	0	0	0	0	0	0	0	1	0
NV Highway Patrol	0	0	0	0	0	0	0	0	0	0	0
Humboldt Co SO	2	0	2	0	0	0	0	0	0	0	2
Lander Co SO	0	0	0	0	0	0	0	0	0	0	0
Las Vegas Metro PD	24	3	21	0	5	0	0	3	9	0	7
Lincoln Co SO	0	0	0	0	0	0	0	0	0	0	0
Lovelock PD	0	0	0	0	0	0	0	0	0	0	0
Lyon Co SO	1	0	1	0	0	0	0	0	0	0	1
Mesquite PD	0	0	0	0	0	0	0	0	0	0	0
Mineral Co SO	0	0	0	0	0	0	0	0	0	0	0
NV Div Investigations	0	0	0	0	0	0	0	0	0	0	0
North Las Vegas PD	0	0	0	0	0	0	0	0	0	0	0
Nye Co SO	1	0	1	0	0	0	0	0	0	0	1
Pershing Co SO	0	0	0	0	0	0	0	0	0	0	0
Reno PD	6	1	5	0	0	0	0	1	3	0	2
Sparks PD	1	1	0	0	0	0	0	0	0	1	0
Storey Co SO	0	0	0	0	0	0	0	0	0	0	0
Taxicab Authority	0	0	0	0	0	0	0	0	0	0	0
TMCC PD	0	0	0	0	0	0	0	0	0	0	0
UNLV PD	0	0	0	0	0	0	0	0	0	0	0
UNR PD	0	0	0	0	0	0	0	0	0	0	0
Washoe Co SO	0	0	0	0	0	0	0	0	0	0	0
Washoe Co School Dist.	0	0	0	0	0	0	0	0	0	0	0
West Wendover PD	0	0	0	0	0	0	0	0	0	0	0
White Pine Co SO	0	0	0	0	0	0	0	0	0	0	0
Winnemucca PD	0	0	0	0	0	0	0	0	0	0	0
Yerington PD	0	0	0	0	0	0	0	0	0	0	0
Totals	40	8	32	0	6	0	0	4	12	4	14

Nevada--Time of Assaults on Officers--UCR

November 2007

Agency	12:01- 2:00 AM	2:00- 4:00 AM	4:00- 6:00 AM	6:00- 8:00 AM	8:00- 10:00 AM	10:00- 12:00 AM	12:01- 2:00 PM	2:00- 4:00 PM	4:00- 6:00 PM	6:00- 8:00 PM	8:00- 10:00 PM	10:00- 12:00 PM
Boulder City PD	0	0	0	0	0	0	0	0	0	0	0	0
Carlin PD	0	0	0	0	0	0	0	0	0	0	0	0
Carson City SO	0	0	0	0	0	0	0	0	1	0	1	0
Churchill Co SO	0	0	0	0	0	0	0	0	0	0	0	0
Clark Co Schl Dist PD	0	0	0	0	0	0	0	0	0	0	0	0
Douglas Co SO	0	0	0	0	0	0	0	0	2	0	0	0
Elko Co SO	0	0	0	0	0	0	0	0	0	0	0	0
Elko PD	0	0	0	0	0	0	0	0	0	0	0	0
Esmeralda Co SO	0	0	0	0	0	0	0	0	0	0	0	0
Eureka Co SO	0	0	0	0	0	0	0	0	0	0	0	0
Fallon PD	0	0	0	0	0	0	0	0	0	0	0	0
Henderson PD	0	0	1	0	0	0	0	0	0	0	0	0
Highway Patrol	0	0	0	0	0	0	0	0	0	0	0	0
Humboldt Co SO	0	0	0	0	0	0	1	0	0	0	1	0
Lander Co SO	0	0	0	0	0	0	0	0	0	0	0	0
Las Vegas Metro PD	3	13	0	0	0	0	4	1	2	0	1	0
Lincoln Co SO	0	0	0	0	0	0	0	0	0	0	0	0
Lovelock PD	0	0	0	0	0	0	0	0	0	0	0	0
Lyon Co SO	0	0	0	0	0	0	0	0	0	0	0	1
Mesquite PD	0	0	0	0	0	0	0	0	0	0	0	0
Mineral Co SO	0	0	0	0	0	0	0	0	0	0	0	0
NV Div Investigations	0	0	0	0	0	0	0	0	0	0	0	0
North LV PD	0	0	0	0	0	0	0	0	0	0	0	0
Nye Co SO	0	0	0	0	0	0	0	0	0	0	0	1
Pershing Co SO	0	0	0	0	0	0	0	0	0	0	0	0
Reno PD	1	1	0	0	0	1	0	1	0	1	1	0
Sparks PD	1	0	0	0	0	0	0	0	0	0	0	0
Storey Co SO	0	0	0	0	0	0	0	0	0	0	0	0
Taxicab Authority	0	0	0	0	0	0	0	0	0	0	0	0
TMCC PD	0	0	0	0	0	0	0	0	0	0	0	0
UNLV PD	0	0	0	0	0	0	0	0	0	0	0	0
UNR PD	0	0	0	0	0	0	0	0	0	0	0	0
Washoe Co SO	0	0	0	0	0	0	0	0	0	0	0	0
Washoe Co Schl PD	0	0	0	0	0	0	0	0	0	0	0	0
West Wendover PD	0	0	0	0	0	0	0	0	0	0	0	0
White Pine Co SO	0	0	0	0	0	0	0	0	0	0	0	0
Winnemucca PD	0	0	0	0	0	0	0	0	0	0	0	0
Yerington PD	0	0	0	0	0	0	0	0	0	0	0	0
Totals	5	14	1	0	0	1	5	2	5	1	4	2

Nevada -- Division Of Investigations

Arrests for Narcotics Violations

November-07

		10-	13-																		Total	W	B	A	I						
		<10	12	14	15	16	17	18	19	20	21	22	23	25-	30-	35-	40-	45-	50-	55-	60-	>64									
SALES/MANUFACTURING VIOLATIONS																															
Opium or cocaine and their derivatives (morphine, heroin, codeine)	M																					1									
	F																					0	1								
Marijuana	M											1	1	1	4	1									8						
	F														1										1	9					
Synthetic narcotics- Manufactured narcotics that can cause true drug addiction (demerol, meth)	M																														
	F																														
Other dangerous, non-narcotic, drugs (barbituates, benzderine)	M												3	2	1	1	1	1	1	1							10				
	F											1		1				1										3	11	1	1
Sub-Total	M	0	0	0	0	0	0	0	0	2	1	1	0	7	2	2	1	1	1	1	0	0	19	0	0	0	0				
	F	0	0	0	0	0	0	0	0	0	0	1	0	1	1	0	0	1	0	0	0	0	4	21	1	0	1				
POSSESSION VIOLATIONS																															
Opium or cocaine and their derivatives (morphine, heroin, codeine)	M																														
	F												1														1	1			
Marijuana	M											1	1	1	1	1									5						
	F																								0	5					
Synthetic narcotics- Manufactured narcotics that can cause true drug addiction (demerol, meth)	M																														
	F																														
Other dangerous, non-narcotic, drugs (barbituates, benzderine)	M													2	1	1									4						
	F											1		1													2	6			
Sub-Total	M	0	0	0	0	0	0	0	0	0	1	0	1	1	1	3	1	1	0	0	0	0	9	0	0	0	0				
	F	0	0	0	0	0	0	0	1	0	0	0	0	2	0	0	0	0	0	0	0	0	3	12	0	0	0				
Total		0	0	0	0	0	0	1	2	2	2	1	11	4	5	2	3	1	1	0	0	35	33	1	0	1					

AGE, RACE AND SEX OF PERSONS CHARGED

18 Years of Age and over

November 2007

CLASSIFICATION OF OFFENSES	SEX															Total Over 18	RACE							
		18	19	20	21	22	23	24	25-29	30-34	35-39	40-44	45-49	50-54	55-59		60-64	over 65	White	Black	American Indian or Alaskan Native	Asian or Pacific Islander		
																	18	White	Black	American Indian or Alaskan Native	Asian or Pacific Islander			
Murder and Nonnegligent Manslaughter	01a	Male	1		2	1														5				
		Female																		1	4	2		
Manslaughter by Negligence	01b	Male			1															1				
		Female																		0	1			
Forcible Rape	02	Male				1			1	1		2	1	2	1	1				10				
		Female																		0	6	4		
Robbery	03	Male	7	10	6	9		3	3	15	8	5	10	6	3					85				
		Female		2				1		2		6		1						12	50	45	1	1
Aggravated Assault (Return A-4a-d)	04	Male	10	6	7	4	7	4	4	34	17	25	16	18	14	4	1	3		174				
		Female	2	3	2	2	2	4	5	11	4	8	6	5	3	2				59	162	64	1	6
Burglary--Breaking or Entering	05	Male	16	16	9	12	5	7	6	15	19	16	15	6	5	2		1		150				
		Female		5	1		2	2	1	6	3	5	4	3	2	2				36	131	49	2	4
Larceny--Theft (except Motor Vehicle Theft)	06	Male	29	28	44	25	14	17	12	67	52	68	51	45	20	6	8	9		495				
		Female	22	13	9	9	11	10	12	46	31	29	26	13	12	5	3	2	2	253	540	178	6	23
Motor Vehicle Theft	07	Male	2	5	1	7	8	2	6	14	14	9	7	7	2	3				87				
		Female		1	1	1	2	1	2	1	2	5	1							17	81	21		2
Other Assaults (Return A-4e)	08	Male	16	34	27	33	55	45	20	176	119	109	100	89	47	19	7	6		902				
		Female	9	11	13	12	16	9	12	69	39	30	40	27	17	9	1	2		316	882	261	21	54
		Male	1								1			1						3				
Arson	09	Female											1							1	4			
		Male	4		1	1	2	3	1	10	9	12	16	4	4	1				68				
Forgery & Counterfeiting	10	Female	2	1		1	1	1	1	10	4	6	4	3	1					35	69	27		7
		Male	3	3	1	2	3	3	6	21	14	12	19	12	3	3		3		108				
Fraud	11	Female	1			2	2		5	12	10	5	5	3		2	1			48	124	27		5
		Male	2	2		1	3	1	4	2	4	3		1	1					24				
Embezzlement	12	Female	4			1		1	1	1	1	3	2	5	1					20	29	10		5
Stolen Property; Buying, Receiving, Possessing	13	Male	5	7	9	6	3	1		8	15	14	7	10	6	2				93				
		Female	1				2	2	1	5		5	3	1	1					21	89	18	4	3
		Male	8	5	8	2	4	5		17	9	8	6	7	5			3		87				
Vandalism	14	Female	2			1				1	2	2	4	3						15	82	16	2	2
Weapons; Carrying, Possessing, etc.	15	Male	2	13	8	10	4	4	7	26	17	13	11	11	1	3		1		131				
		Female	1			2	1			1	4	6								15	115	28		3
Prostitution and Commercialized Vice	16	Male	1	2	4	1	2		2	20	21	11	10	13	4	3	2	1		97				
		Female	14	10	23	27	23	19	15	44	20	24	15	13	5					252	209	125	2	13
Sex Offenses (except Forcible Rape and Prostitution)	17	Male	2	1	1	2	2	2		11	16	8	11	12	3	7	3	3		84				
		Female							1	1	3	1		3	2					11	82	10	1	2
Drug Abuse Violations Grand Total	18	Male	40	58	47	53	38	45	31	155	115	93	69	61	29	13	4	1		852				
		Female	14	18	9	8	9	5	7	32	23	31	15	15	6	1	0	0		193	694	327	6	18
(1) Sale/Manufacturing Subtotal	180	Male	5	7	11	11	10	9	1	36	15	18	12	8	9	3	0	0		155				
		Female	3	5	5	1	2	0	0	8	1	4	1	4	1	0	0	0		35	115	70	1	4
Opium or Cocaine and Their Derivatives (Morphine, Heroin, Codeine)	a	Male	2	3	6	5	3	5		13	6	3	5	3	4	2				60				
		Female		2	4					3		2		2						13	38	34		1
		Male	2	1	1	3	4	2	1	7	2	3	1		1					28				
Marijuana	b	Female	1	3		1					2									7	20	13		2
Synthetic Narcotics--Manufactured Narcotics Which Cause True Drug Addiction (Demerol, Methadone)	c	Male		1		2	1	1		8	1	9	3	4	2	1				33				
		Female					1			2			1	1	1					6	33	6		
Other Dangerous Non-Narcotic Drugs (Barbiturates, Benzedrine)	d	Male	1	2	4	1	2	1		8	6	3	3	1	2					34				
		Female	2		1		1			3	1			1						9	24	17	1	1

CLASSIFICATION OF OFFENSES		SEX																Total Over	RACE				
			18	19	20	21	22	23	24	25-29	30-34	35-39	40-44	45-49	50-54	55-59	60-64		over 65	18	White	Black	American Indian or Alaskan Native
		Male	35	51	36	42	28	36	30	119	100	75	57	53	21	9	4	1	697				
(2) Possession - Subtotal	185	Female	11	13	4	7	7	5	7	24	22	27	14	11	5	1	0	0	158	579	257	5	14
Opium or Cocaine and Their Derivatives (Morphine, Heroin, Codeine)		Male	2	4	1	2	3	2	15	11	16	18	14	8	2	3	1		102				
		Female	2	1	1	3		1	3	3	6	2	4	1					27	69	59	1	
Marijuana		Male	34	43	28	31	23	28	21	79	62	29	24	19	7	7	1		436				
		Female	6	10	2	3	5	3	3	12	9	11	3	2	1	1			71	329	166	3	9
Synthetic Narcotics-Manufactured Narcotics Which Cause True Drug Addiction (Demerol, Methadone)		Male	1	2		8	3	4	4	18	20	19	8	12	5				104				
		Female	2	1	1	1	1	1	2	6	8	7	5	3	2				40	128	12	1	3
Other Dangerous Non-Narcotic Drugs (Barbiturates, Benzedrine)		Male		4	4	2		1	3	7	7	11	7	8	1				55				
		Female	1	1		1	1	1	3	2	3	4	2	1					20	53	20		2
Gambling Total	19	Male	0	0	0	0	0	0	0	0	0	0	0	0	0	0	0	0	0	0	0	0	0
		Female	0	0	0	0	0	0	0	0	0	0	0	0	0	0	0	0	0	0	0	0	0
Bookmaking (Horses and Sports Book)		Male																	0				
		Female																	0				
Numbers and Lottery		Male																	0				
		Female																	0				
All Other Gambling		Male																	0				
		Female																	0				
Offenses Against Family and Children	20	Male	6	4	1	4	4	2	2	18	2	5	6	6	5				65				
		Female	2	2	1	2	3	1	2	10	4	4	5	3	2				41	96	5		5
Driving Under the Influence	21	Male	16	20	31	32	40	50	32	173	114	95	85	80	58	33	13	11	883				
		Female	2	1	5	7	7	7	10	41	29	33	36	15	21	14	3	6	237	1021	70	12	17
Liquor Laws	22	Male	55	40	46	7	7	9	6	41	22	30	45	55	30	8	5	4	410				
		Female	21	20	18		1	2	5	3	5	6	6	8	1		1		97	419	70	10	8
Drunkenness	23	Male		1			1	1					1						4				
		Female											1						1	5			
Disorderly Conduct	24	Male	1		1	2	7	5	6	19	12	15	23	14	8	9	5		127				
		Female		1	1	1	2			3	4	3	1	1	1		1		19	112	27	1	5
Vagrancy	25	Male	3	2	2	1	2	1		9	8	24	37	37	19	7	4	5	161				
		Female	2	5	3		1			4	1	1	2	4	4	3			30	154	34		3
All Other Offenses (except Traffic) Total	26	Male	77	121	124	123	107	104	111	456	388	390	411	361	203	99	39	33	3147				
		Female	16	41	44	47	59	41	44	183	105	120	102	85	35	19	2	5	948	2819	1147	39	90
Suspicion	27	Male																	0				
		Female																	0				
GRAND TOTAL			422	512	511	462	461	419	382	1797	1288	1301	1234	1067	592	281	102	100	10931	7980	2565	108	276

Uniform Crime Reporting
Records & Identification Bureau
Department of Public Safety
808 west Nye Lane
Carson City NV 89703

AGE, SEX, AND RACE OF PERSONS CHARGED

November 2007

18 Years of age and under

(Count all Offences even if the Arrest is based on only one charge)

CLASSIFICATION OF OFFENSES	SEX	AGE							Total Under 18	RACE				
		Under 10	10-12	13-14	15	16	17	18		White	Black	American Indian or Alaskan Native	Asian or Pacific Islander	
Murder and Nonnegligent Manslaughter	01a	Male						1	1					
		Female							0		1			
Manslaughter by Negligence	01b	Male							0					
		Female							0					
Forcible Rape	02	Male					1	1	2					
		Female							0		2			
Robbery	03	Male		1	3	3	6	8	21					
		Female					1	1	2	12	11			
Aggravated Assault (Return A-4a-d)	04	Male		1	2	4	4	15	26					
		Female		1		1		1	3	22	7			
Burglary--Breaking or Entering	05	Male		1	8	7	7	6	29					
		Female			2	4	2	1	9	28	9			1
Larceny--Theft (except Motor Vehicle Theft)	06	Male		10	23	29	19	32	113					
		Female	1	5	20	15	17	22	80	126	51	2		14
Motor Vehicle Theft	07	Male			1	2	2	2	7					
		Female				1	1		2	7	2			
Other Assaults (Return A-4e)	08	Male	2	19	18	12	21	15	87					
		Female	1	5	13	12	8	3	42	101	27	1		
Arson	09	Male	3	1	1	1			6					
		Female						1	1	7				
Forgery & Counterfeiting	10	Male					1		1					1
		Female							0					
Fraud	11	Male					2	2	4					
		Female							0	2	2			
Embezzlement	12	Male					1	3	4					
		Female							0	2				1
Stolen Property; Buying, Receiving, Possessing	13	Male			2	1	2	4	9					
		Female			2		2	1	5	7	6			1
Vandalism	14	Male		8	17	9	7	11	52					
		Female		2	6	2	1	1	12	52	10			2
Weapons; Carrying, Possessing, etc.	15	Male		1	5	2	2	7	17					
		Female				1	1	1	3	16	3			1
Prostitution and Commercialized Vice	16	Male							0					
		Female				1	1		2	1	1			
Sex Offenses (except Forcible Rape and Prostitution)	17	Male	1	1	3	1	3	3	12					
		Female							0	12				
Drug Abuse Violations	18	Male	0	4	16	17	17	29	83					
Grand Total	18	Female	0	0	1	2	1	4	8	74	16	0		1
(1) Sale/Manufacturing Subtotal	180	Male	0	1	6	5	4	6	22					
		Female	0	0	0	0	1	0	1	19	4	0		0
Opium or Cocaine and Their Derivatives (Morphine, Heroin, Codeine)	a	Male				1	1		2					
		Female							0		2			
Marijuana	b	Male			6	4	3	2	15					
		Female							0	13	2			
Synthetic Narcotics-Manufactured Narc Cause True Drug Addiction (Der	c	Male					1		1	1				
		Female							0					
Other Dangerous Non-Narcotic Drugs (Barbiturates, Benzadrine	d	Male		1				4	5					
		Female							0	5				
(2) Possession - Subtotal	185	Male	0	3	10	12	13	23	61					
		Female	0	0	1	2	0	4	7	55	12	0		1
Opium or Cocaine and Their Derivatives (Morphine, Heroin, Codeine)	e	Male				3		2	5					
		Female			1				1	6				
Marijuana	f	Male		3	10	9	12	19	53					
		Female				2		3	5	45	12			1
Synthetic Narcotics-Manufactured Narc Cause True Drug Addiction (Der	g	Male						1	1					
		Female						1	1	2				
Other Dangerous Non-Narcotic Drugs (Barbiturates, Benzadrine	h	Male				1		1	2					
		Female							0	2				

CLASSIFICATION OF OFFENSES		SEX	AGE						Total Under 18	RACE			
			Under 10	10-12	13-14	15	16	17		White	Black	American Indian or Alaskan Native	Asian or Pacific Islander
Gambling Total	19	Male	0	0	0	0	0	0	0	0	0	0	0
		Female	0	0	0	0	0	0	0	0	0	0	0
Bookmaking (Horses and Sports Book)	a	Male							0				
		Female							0				
Numbers and Lottery	b	Male							0				
		Female							0				
All Other Gambling	c	Male							0				
		Female							0				
Offenses Against Family and Children	20	Male				2		1	3	5	1		
		Female		1	1			1	3	5	1		
Driving Under the Influence	21	Male					2	7	9				
		Female						1	1	10			
Liquor Laws	22	Male		1	10	24	39	38	112	146	9	7	5
		Female		1	4	17	17	16	55	146	9	7	5
Drunkenness	23	Male						2	2				
		Female				1			1	3			
Disorderly Conduct	24	Male		2	1	2	3	3	11				
		Female		1		1			2	12		1	
Vagrancy	25	Male					3	1	4				
		Female							0	4			
All Other Offenses (except Traffic) Total	26	Male	1	11	36	54	47	54	203	253	27	4	5
		Female	1	3	18	21	23	18	84	253	27	4	5
Suspicion	27	Male							0				
		Female			1				1	1			
Curfew and Loitering Law Violati	28	Male		5	29	28	49	43	154				
		Female		3	27	18	14	18	80	164	66		4
Runaway	29	Male		5	10	13	14	11	53				
		Female		3	15	27	26	7	78	110	13		8
GRAND TOTAL			10	96	295	335	367	396	1499	1177	264	15	44

Uniform Crime Reporting
Records & Identification Bureau
Department of Public Safety
808 West Nye Lane
Carson City NV 89703



Nevada UCR *Footnotes / Exceptions

November 2007

Table 1

--Nevada figures are annualized projections.

--"Assault" does not include simple assaults to allow direct comparison between the Nevada rate and the National rate for this Index offense. See Table 8 for a count of all assaults.

Table 2

--The LV Fire Department reports "Arson" offenses for the City of Las Vegas. The population figure for this agency represents jurisdiction and is not added to the county total. Similarly, the School District Police Departments in Clark and Washoe Counties are not added to county population estimates as they represent persons served (student enrollment plus staff.)

--Assault data in this table includes ALL assaults (aggravated and simple) reported for the current month.

--County crime rates are calculated following subtraction of populations of jurisdictions failing to report.

Table 3

-- In the "Nevada vs National Index Crime and Clearance Rates" sections, the "Assaults" numbers do not include simple assaults following FBI guidelines. Therefore, they may be compared directly to National rates.

-- National crime rate figures are the latest available for comparative use (2005). Nevada figures are annualized projections.

Table 13

--At various times, property values recovered will exceed values stolen for the current reporting period.

General Notes:

- The following agencies was unable to submit reports for this month:

Clark County School District Police Department
Lander County Sheriff Office
Storey County Sheriff Office

-- Any late reports not submitted in time for this publication will be incorporated in to the year-to-date totals in subsequent reports.